

Copyright 日本建築学会

明治二十七年以後

5/11
 5/12
 5/13
 5/14
 5/15
 5/16
 5/17
 5/18
 5/19
 5/20
 5/21
 5/22
 5/23
 5/24
 5/25
 5/26
 5/27
 5/28
 5/29
 5/30
 5/31

塚本方
 京都川端花町下

伊東忠太

在東京市川水邊約二十日
三十七日他由都工部局由
早川定夜

池田已掘有十二分地
鳥居新築

山崎山新分估之費

古之田
堀布已三音

山崎直沙河三十五分地
野口築市



在東京市川水邊約二十日
三十七日他由都工部局由

早川定夜

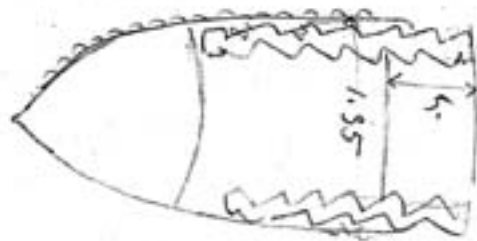
1740297
126006
72000

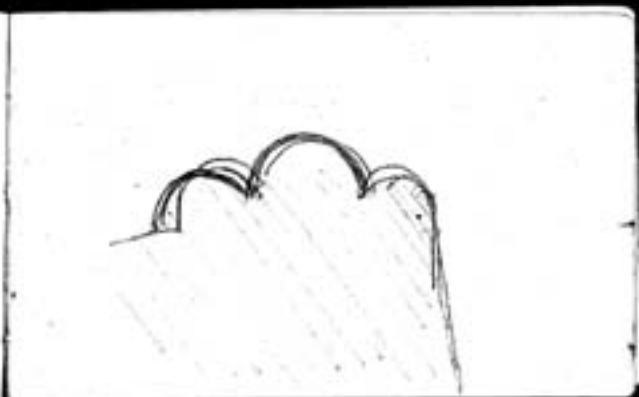
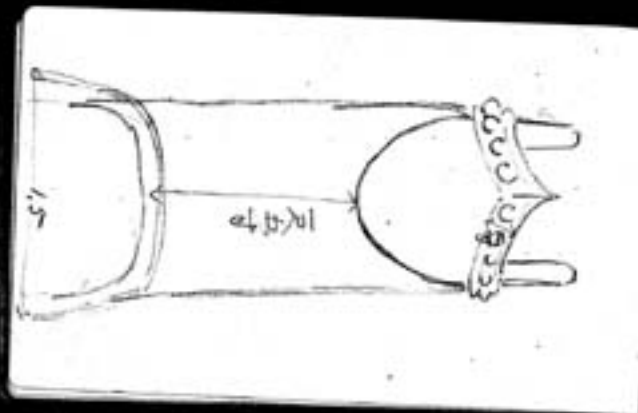
1938299

下至區諸姓通七等下九
水口以初
學子之歲家河三下四等地
王合二力
力誠存
陽自島之祖可五十二等也
有上為三
星江名名書

晨渡鳧水去
夕臨東山歸

洛陽日月逢





MW General work
 @ 2.9
 $-\frac{1}{2} = \frac{1}{2} + 1$
 $8 \times 5 \times 10 = .64$
 $49.25 = 690 \text{ @ } = 1 \times$
 1000



自持云

玉清机 八控三年中 (弘文式)



ヲ明カニ文也カモ限ラズ
強ク附信者出七
種ノ由也 色法抄卷 (抱負)

(抱負) 白雲持也

一語云へいさ可六朝ニ傲ヒ
兼化ノ何カ欠ク事申事
吾白大ニ述下りなり 是ガ天也
空母、遠行ノ者之トナリ

五二ノ時片カ十三歳時ナリ

大守人陰行也 是也 信取持也
りとも後もぬらぬらトナリ

赤染ハ十歳ヨリ一十四歳ニ至ル也
ノ十歳ハ已ニ信取カニテ一
也カノカニテカニ

十歳ノ時

善善ハ 実山来行

是別 大珠的ナリ

之病、孝服、信會、律書ハ
密教ナリ

中集ハ理端ノミチチ方法ヲ
復スル象人ノ耳々ニ密著
ク台器ヲ割裂ツミトスナ
ヨリ正切ノ性ノミチチ
密ハ毛心ヲ信ツノ意ナリ神
ハ心ニモ注ミナリ古時ノ
秘ハ密著ノ意ニ通ス
呂氏京徒地ノ画ハ
地球ノ画ノ創ト云フ

死仁式ノ成立

才一 天乎ノ反物

才二 厚如力

才三 原キ、文物

以上ノ三才ヨリ觀ルモノ

運策規矩ニ度ノ長サノ

概ニ、

才一 天乎ノ反物

才二 厚如力

才三 原キ、文物

以上ノ三才ヨリ觀ルモノ

運策規矩ニ度ノ長サノ

概ニ、

才一 天乎ノ反物

才二 厚如力

才三 原キ、文物

計-丙	50
丙-甲	52
甲-乙	38
乙-丙	127
計-全	267

敬一 寄
敬一 寄

298 ⁰⁰
<u>165</u>
464

敬一 後長、以て、
 敬一 中一、
 敬一 土佐、
 敬一 六、
 敬一 三、
 敬一 四、
 敬一 表、
 敬一 母、
 敬一 感、
 敬一 心、
 敬一 天、

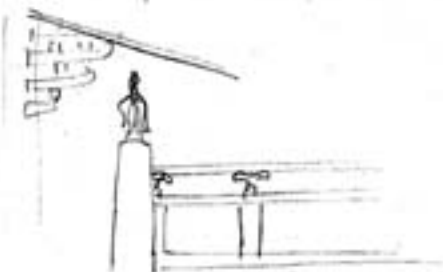
共 02

-02 11012

11013-12418

11019-12420

no. per 100 英	safety Lead 英	ultimate Lead 英	cl. #
0.540	140.		0.20
1.08	280.		0.30
1.72	420.	1860.	0.40
2.18	570.	2900.	0.50
4.52	1140.	4340.	0.60
5.76	1890.	5660.	0.70
7.20	2340.	7460.	0.80
10.40	3360.	11600.	1.00
15.40	5590.	16790.	1.25



$$\begin{array}{r} 277 \\ 277 \\ 145 \\ \hline 1731 \\ \hline 132.6 \end{array}$$

$$\begin{array}{r} 8892 \\ 2999 \\ 89 \\ \hline 1550 \\ 600 \\ \hline 2150 \\ 8810 \\ \hline 114 \\ \hline 132.76 \end{array}$$

59

$$\begin{array}{r} 1668 \\ 19000 \\ 24000 \\ 20000 \\ \hline 85668 \\ 11113 \\ \hline 2570.04 \\ 132. \\ 132. \\ \hline 2840.4 \end{array}$$

$$= \frac{\text{真利率} \times \text{真利率}}{8 \times \text{真利率}}$$

$$\begin{array}{r} 00 \\ 50 \times 5.8 \\ \hline 4 \times 0.03 \\ .24 \end{array}$$

$$24 \overline{) 25000} \overline{) 1041}$$

$$\begin{array}{r} 24 \\ \hline 104 \\ \hline 20 \\ \hline 20 \\ \hline 0 \end{array}$$



12 18
 6 89
 8 88
 160 8
 15 8
 11
 5969

蘇州（十九日）地志編刊司

敘音調查

某處地志。何也。

元支路

大物級 44623 ₀₂ 26780

寺所 51762 ₀₂ 25120

高橋 59754 ₀₂ 23200

社天 28349 ₀₂ 16365

192485

三月十日

石封三件

石封三件

竹葉束三件

竹葉束三件

紙形三件

紙形三件

吾家宮寺封地紙三件

吾家宮寺封地紙三件

紙三件

紙三件

同分及宮寺之封地紙八日某内

大動又地紙三件

十一日

凡六件

波布二件

十二日

竹葉束三件

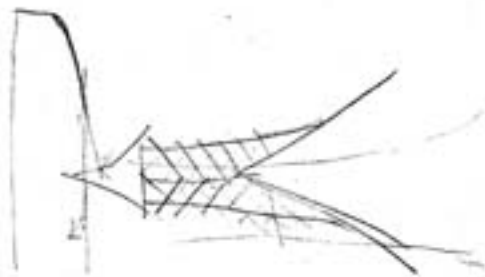
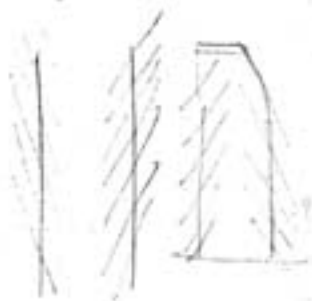
紙形三件

土盛三件

古紙三件

古紙三件

古紙三件





此物係用木料製成

其形如右圖所示

其功用在於...

此物係用...

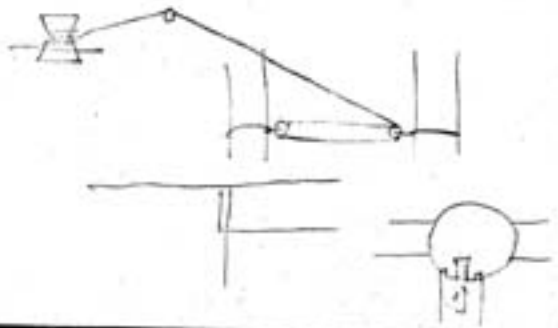
其形如右圖所示

其功用在於...

此物係用...

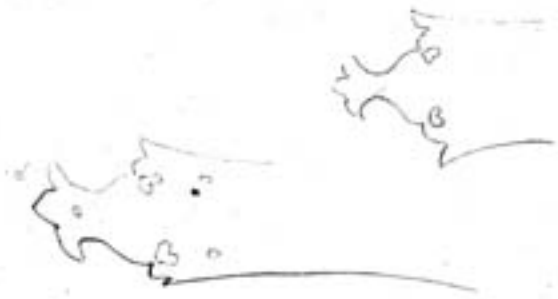
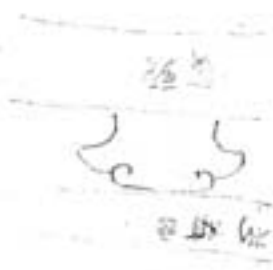
其形如右圖所示

其功用在於...

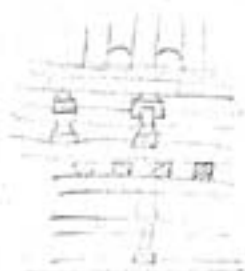
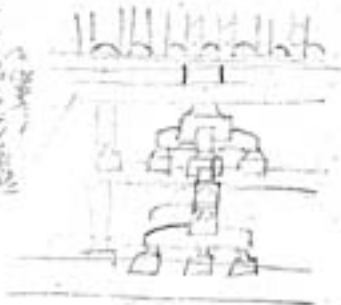


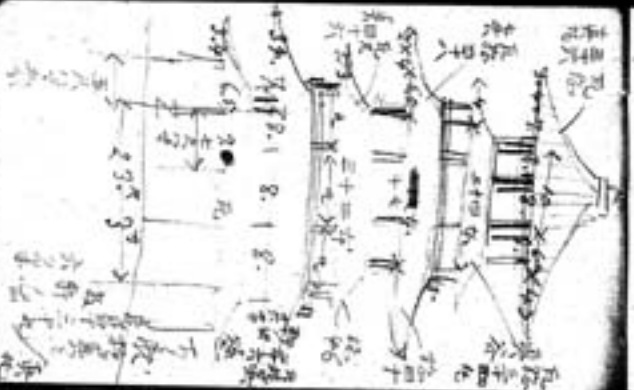
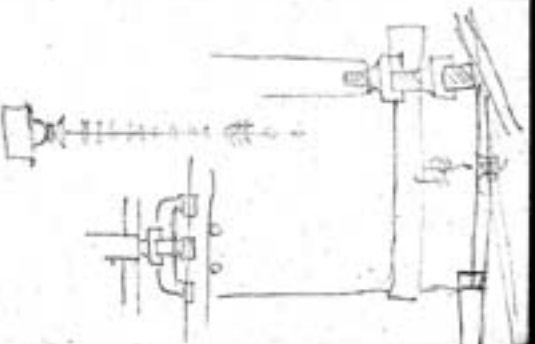


2
3
4
5
6
7
8
9
10
11
12
13
14
15
16
17
18
19
20
21
22
23
24
25
26
27
28
29
30
31
32
33
34
35
36
37
38
39
40
41
42
43
44
45
46
47
48
49
50
51
52
53
54
55
56
57
58
59
60
61
62
63
64
65
66
67
68
69
70
71
72
73
74
75
76
77
78
79
80
81
82
83
84
85
86
87
88
89
90
91
92
93
94
95
96
97
98
99
100



1880
1881
1882
1883
1884
1885
1886
1887
1888
1889
1890
1891
1892
1893
1894
1895
1896
1897
1898
1899
1900



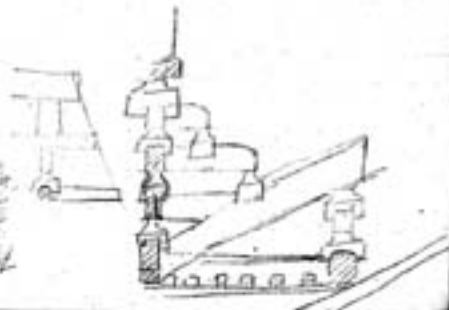


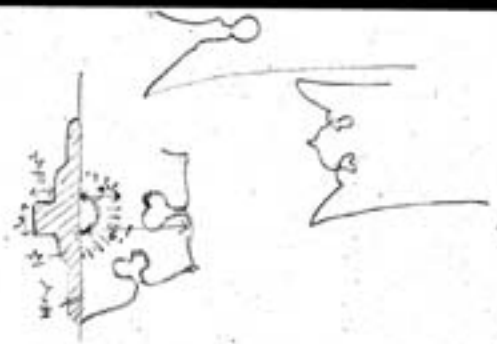
Handwritten text at the top of the left page, possibly a title or reference.



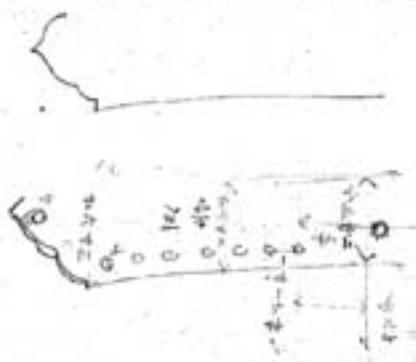
$$\frac{568}{504} = 1.127$$

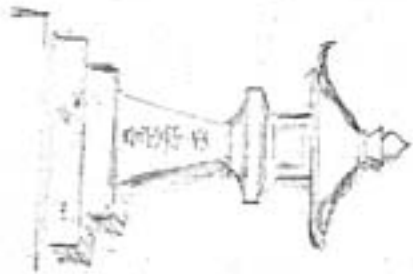
Handwritten text on the left side of the right page, including the number '2' and some other characters.





Handwritten text, possibly a name or date, written vertically on the left page of the right-hand page.





Handwritten notes at the top of the right page, possibly including a title or date.

Handwritten notes on the right page, possibly describing a process or observation.

Handwritten notes on the right page, possibly describing a process or observation.

Handwritten notes on the right page, possibly describing a process or observation.

Handwritten notes on the right page, possibly describing a process or observation.

Handwritten notes on the right page, possibly describing a process or observation.

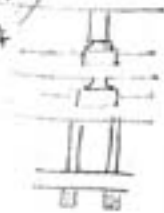
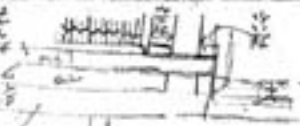
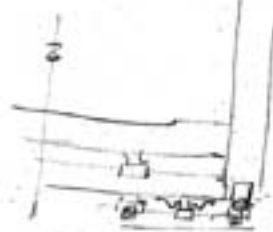
Handwritten notes on the right page, possibly describing a process or observation.

Handwritten notes on the right page, possibly describing a process or observation.



Handwritten notes at the top of the left page, possibly including a title or date.

Handwritten notes on the left page, possibly describing a process or observation.



Handwritten text at the top of the right page.

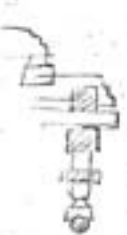
Handwritten text below the top header on the right page.



Handwritten text below the drawing on the right page.

Handwritten text below the drawing on the right page.

Handwritten text on the right page, possibly describing the drawing.



Handwritten text below the drawing on the right page.

Handwritten text on the right page, possibly describing the drawing.

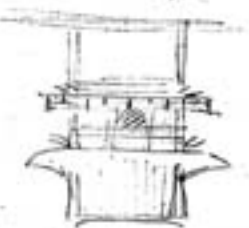
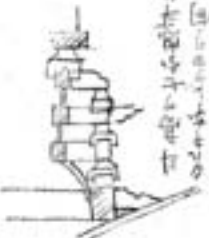


Figure 1: A simple frame structure with two columns and a beam.

Figure 2: A diagram showing a vertical beam with a horizontal force applied at the top.

Figure 3: A diagram showing a beam with a horizontal force applied at the top and a reaction force at the bottom.

Figure 4: A diagram showing a beam with a horizontal force applied at the top and a reaction force at the bottom, with a label 'H' for the horizontal force.

Figure 5: A diagram showing a beam with a horizontal force applied at the top and a reaction force at the bottom, with a label 'H' for the horizontal force.

Figure 6: A diagram showing a beam with a horizontal force applied at the top and a reaction force at the bottom, with a label 'H' for the horizontal force.

Figure 7: A diagram showing a beam with a horizontal force applied at the top and a reaction force at the bottom, with a label 'H' for the horizontal force.

Figure 8: A diagram showing a beam with a horizontal force applied at the top and a reaction force at the bottom, with a label 'H' for the horizontal force.

Figure 9: A diagram showing a beam with a horizontal force applied at the top and a reaction force at the bottom, with a label 'H' for the horizontal force.

Figure 10: A diagram showing a beam with a horizontal force applied at the top and a reaction force at the bottom, with a label 'H' for the horizontal force.

Figure 11: A diagram showing a beam with a horizontal force applied at the top and a reaction force at the bottom, with a label 'H' for the horizontal force.

Figure 12: A diagram showing a beam with a horizontal force applied at the top and a reaction force at the bottom, with a label 'H' for the horizontal force.

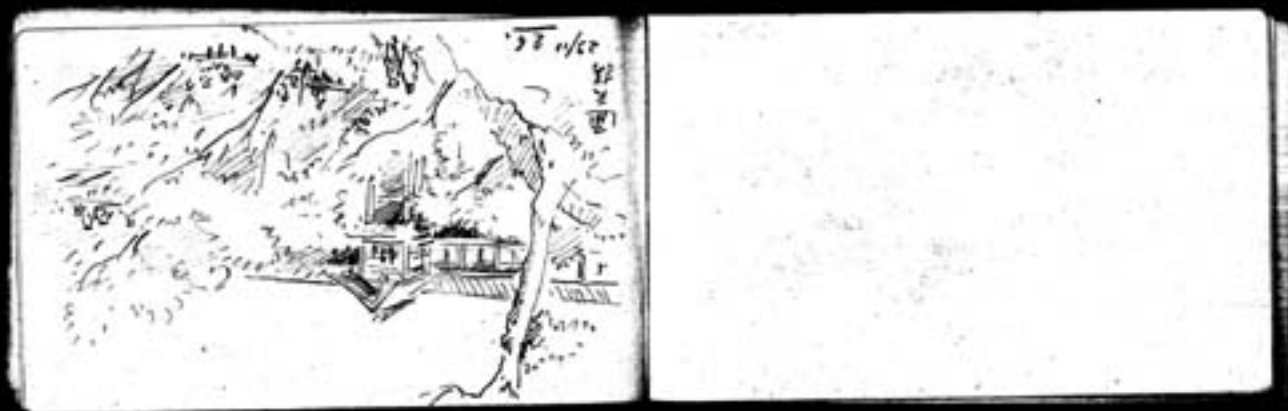
Figure 13: A diagram showing a beam with a horizontal force applied at the top and a reaction force at the bottom, with a label 'H' for the horizontal force.

Figure 14: A diagram showing a beam with a horizontal force applied at the top and a reaction force at the bottom, with a label 'H' for the horizontal force.

Figure 15: A diagram showing a beam with a horizontal force applied at the top and a reaction force at the bottom, with a label 'H' for the horizontal force.

Figure 16: A diagram showing a beam with a horizontal force applied at the top and a reaction force at the bottom, with a label 'H' for the horizontal force.

Figure 17: A diagram showing a beam with a horizontal force applied at the top and a reaction force at the bottom, with a label 'H' for the horizontal force.



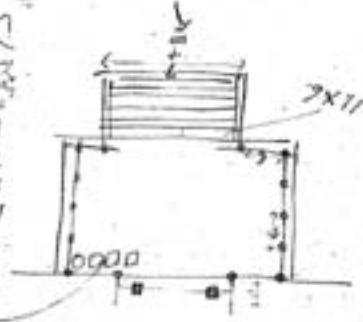
100
98
95
90
85
80
75
70

100
98
95
90
85
80
75
70

10995.2

10995.2
100
98
95
90
85
80
75
70

1. 此图为一
 2. 示意图
 3. 仅供参考

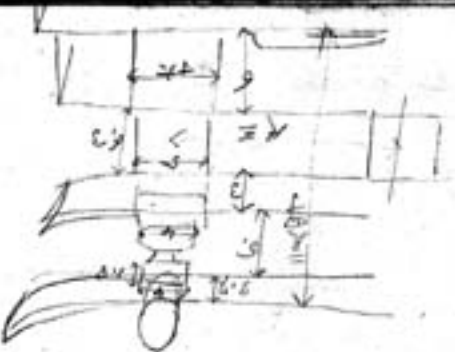


1. 此图为一
 2. 示意图
 3. 仅供参考

① 周长 = 5 号
 ② 原土 = 16 号
 ③ 净高 = 2.9 号
 ④ 719 = 0.5

五号投分

三区又
 地押小松限



2015
9/14/2015

Handwritten notes in a non-Latin script, likely a form of Arabic or Persian, including a date and several lines of text.

2015
9/14/2015
Handwritten notes in a non-Latin script, likely a form of Arabic or Persian, including a date and several lines of text.

underneath 18149

W. in *Thunbergia* 7114

W. 11 130 12

W. 11 130 12

W. 11 130 12

W. 11 130 12

W. 11 130 12

W. 11 130 12

W. 11 130 12

W. 11 130 12

W. 11 130 12

W. 11 130 12

W. 11 130 12

W. 11 130 12

W. 11 130 12

W. 11 130 12

W. 11 130 12

W. 11 130 12

W. 11 130 12

W. 11 130 12

W. 11 130 12

W. 11 130 12

W. 11 130 12

W. 11 130 12

W. 11 130 12

W. 11 130 12

W. 11 130 12

W. 11 130 12

W. 11 130 12

西多王
王多王
王多王
王多王

(1) 王多王 (王多王)
王多王
王多王



王多王
王多王
王多王
王多王

王多王
王多王

内本

内本

内本

内本

内本

内本

内本

内本

内本

外本

外本

外本

外本

外本

外本

外本

外本

外本

外本

外本

外本

外本

612
5.30 中野
3.00 浅野

1	9.50	11.20	12.50	14.20	15.50	17.20	18.50	20.20	21.50	23.20	24.50	26.20	27.50	29.20	30.50
2	9.50	11.20	12.50	14.20	15.50	17.20	18.50	20.20	21.50	23.20	24.50	26.20	27.50	29.20	30.50

米
10.50
11.50
12.50

12/1.26.

酒、 大、 大、 大、	11.、 11.、 11.、 11.、
----------------------	------------------------------

1900. 711.000.000

11.、 11.、 11.、	01.、 11.、 11.、
----------------------	----------------------

11.、
11.、
11.、

Copyright 日本建築学会

明治二十七年以後