





五
百
七



QVINTO LIBRO D'ARCHITECTURA
 TERTIA DI SAN
 NUNZIO DE' LIO
 N. 1201, come se sempre fo
 secondo cultura Christiana, et al
 in laf. regia in R. An. di Navarra.

Traduit en Francois par Jan Martin,
 Libraire de Monsieur le Cardinal de Lenoxcourt.

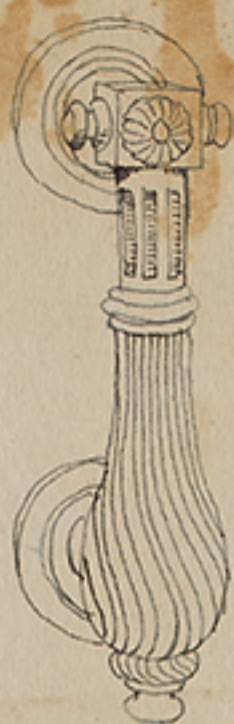
A PARIS,
 DE L'IMPRIMERIE DE MICHEL DE VASCOSAN.
 M. D. XLII.
 AVEC PRIVILEGE DE



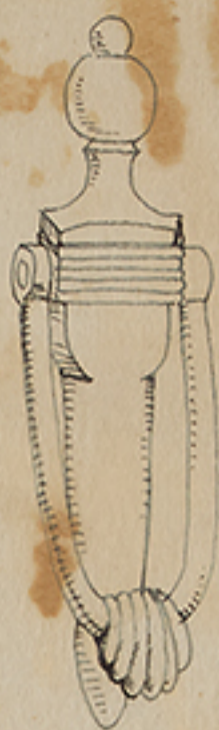
Polished Brass Knockers



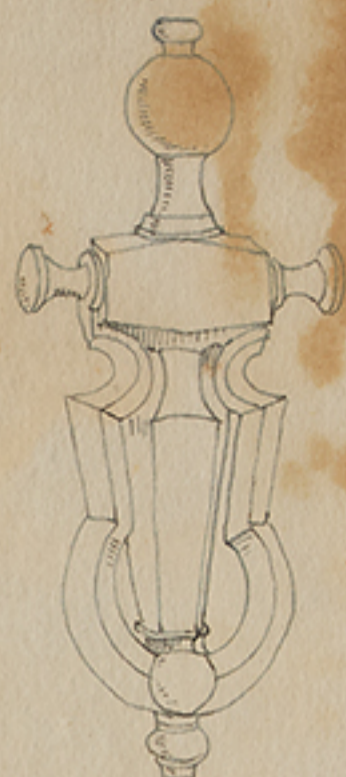
Scroll Pattern
6½"
(price) 8/3



Spiral Pendant
6½" 23/-
8" 21/-



Early English
8"
5/6

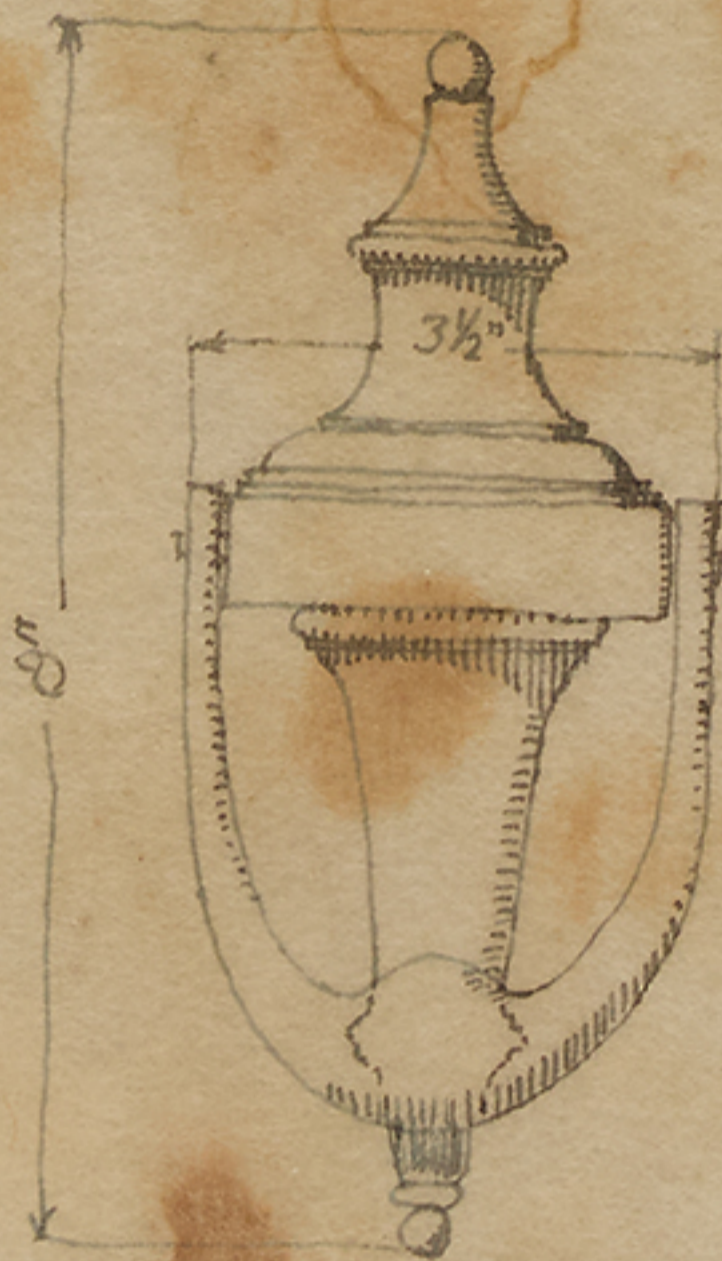


Early English
8½"
5/3

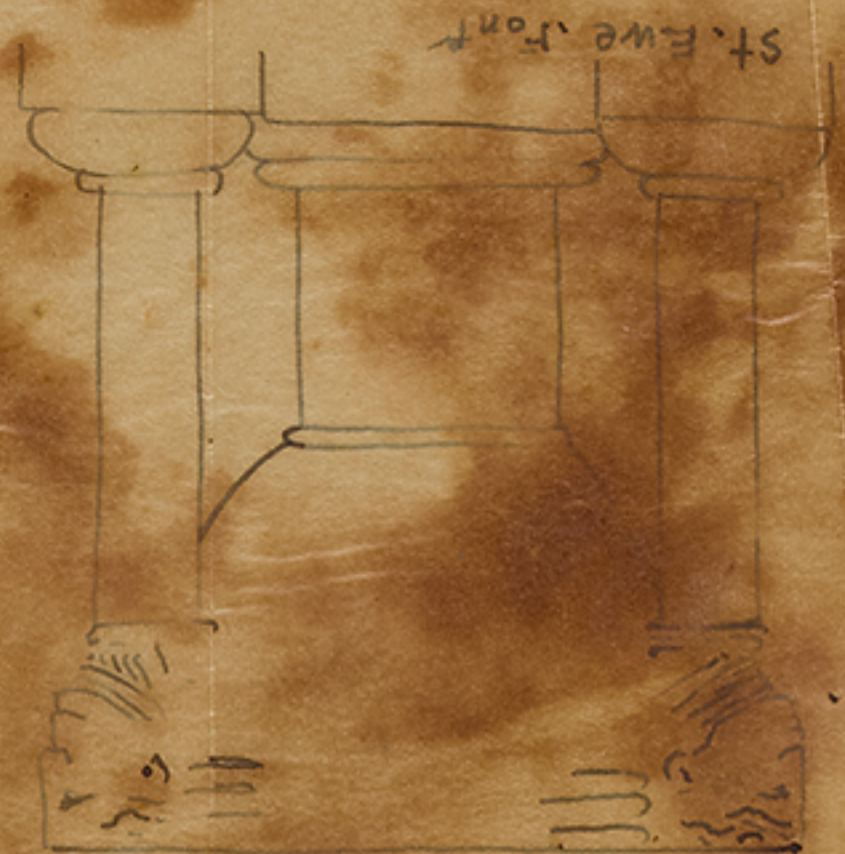


Bold Loop
6¾"
18/-

JAMES HILL, London
1888



BRASS-KNOCKER



St. Ewe Font



St. Columc-Minor Font



St. wby. font

St. wby. font

Birkland Font



St. Brewerd Font

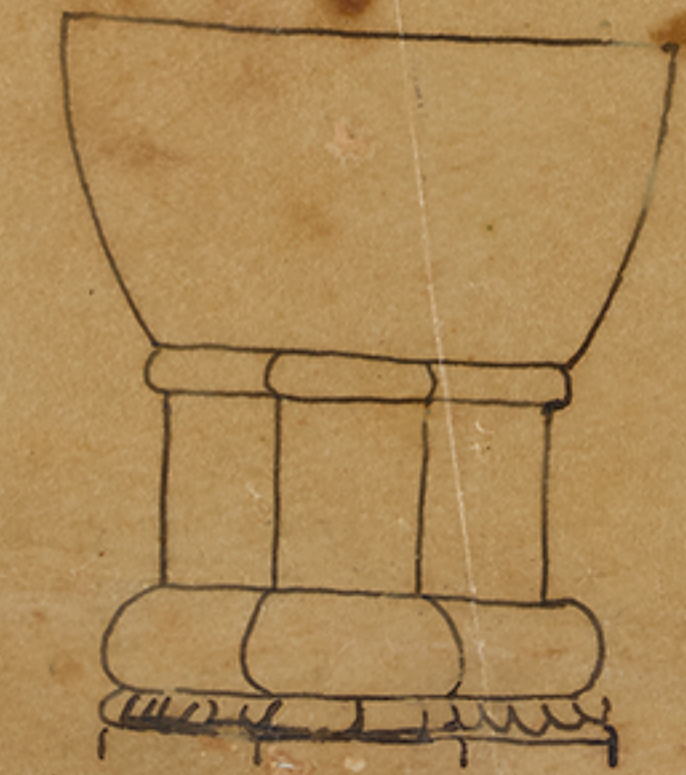


Square



circle

Altarnun. Font



advent. Font

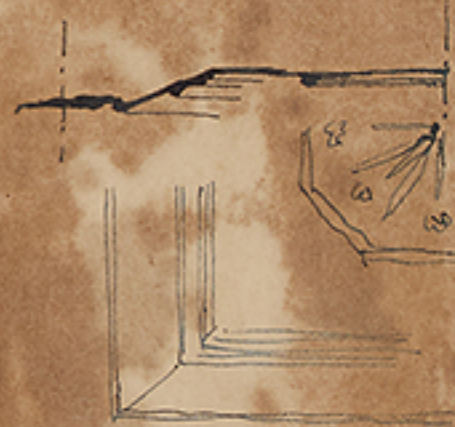


HOLDFASTS



CUT-OUTS







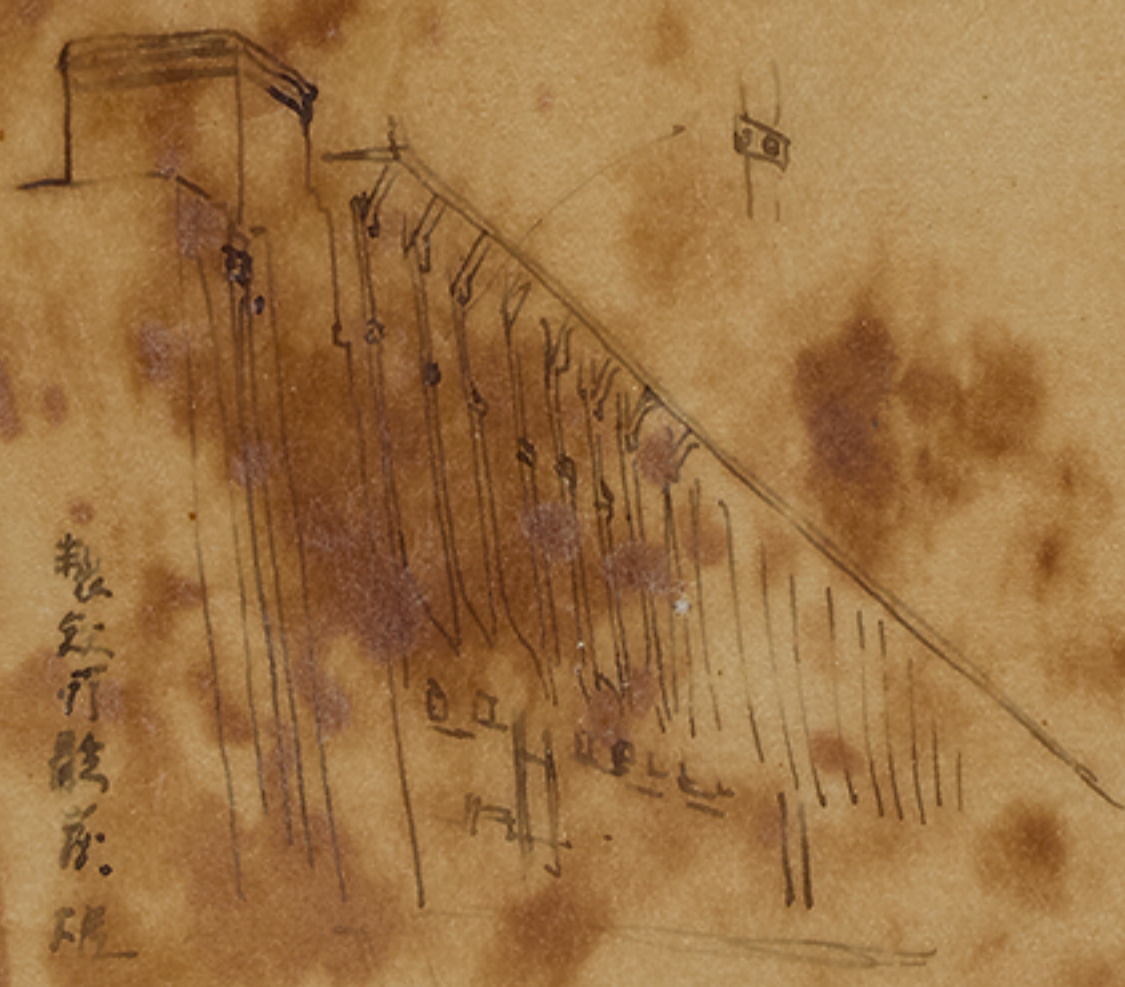




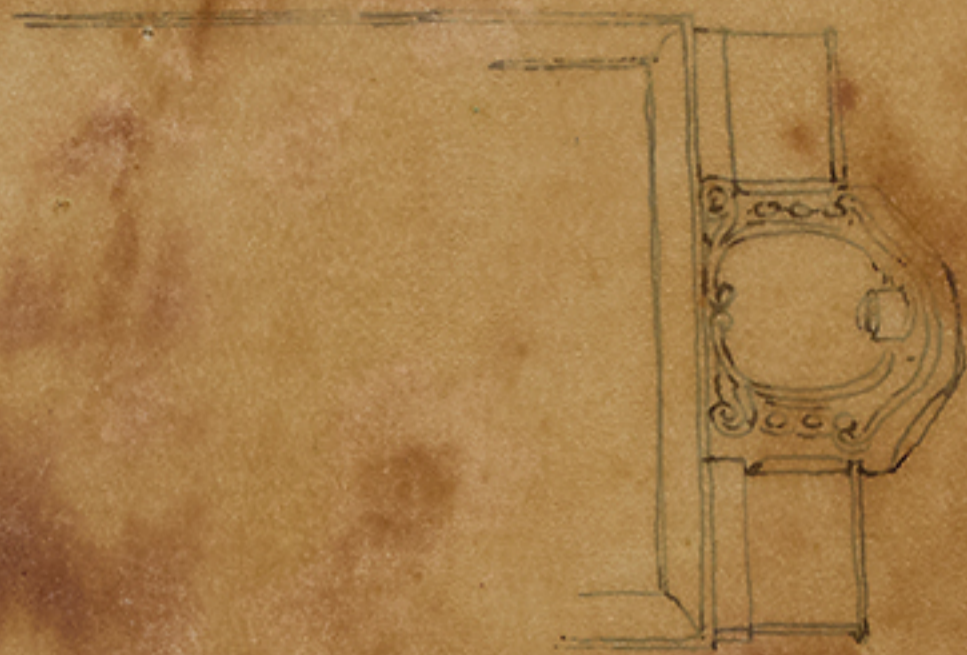


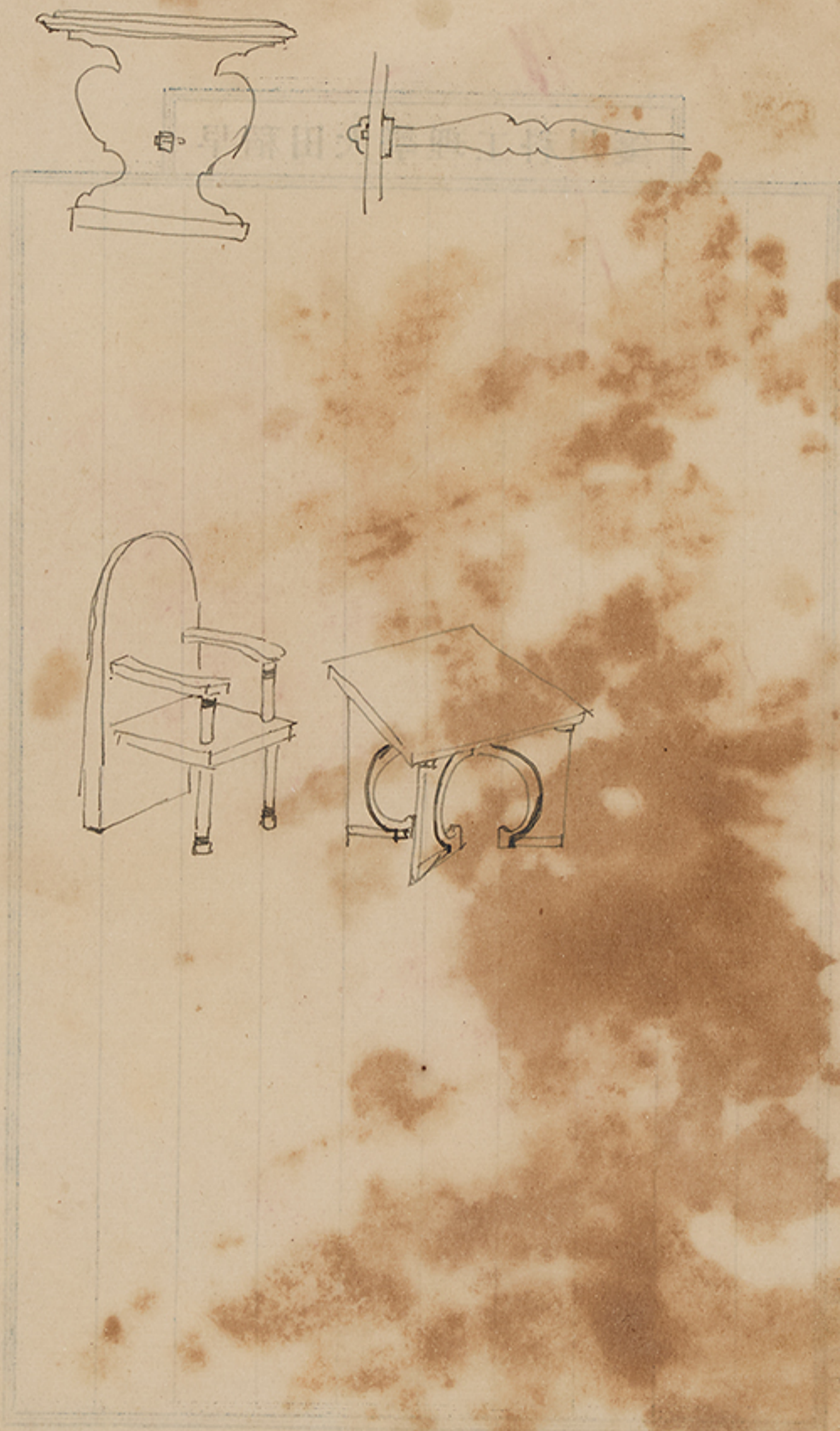
ROMANESQUE
MOULDINGS.





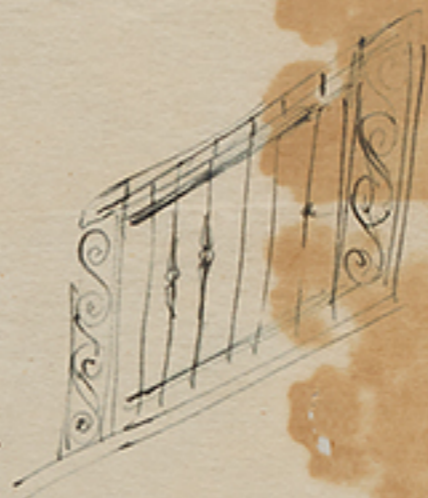
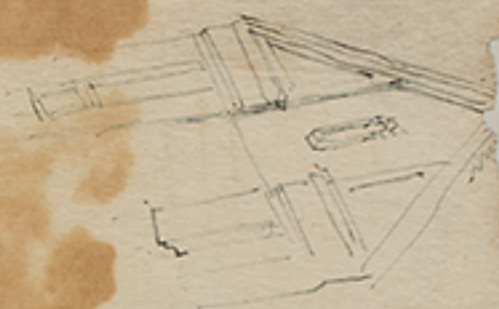
製鉄所
記念碑

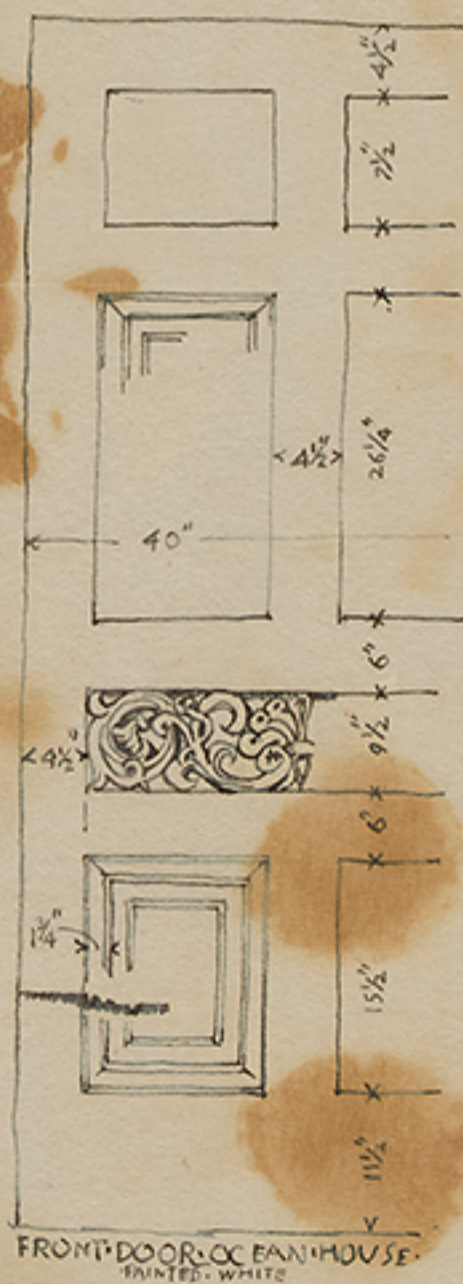
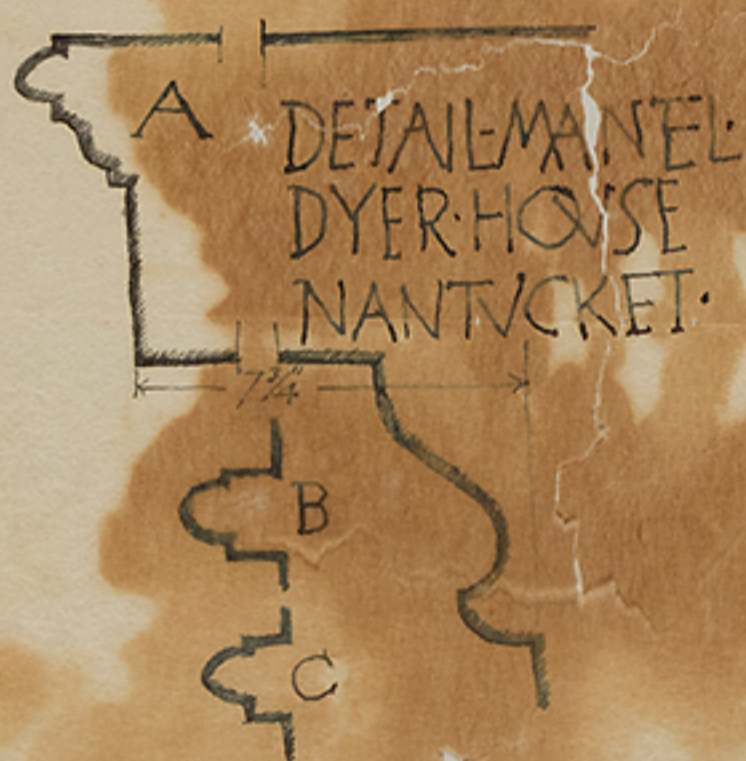
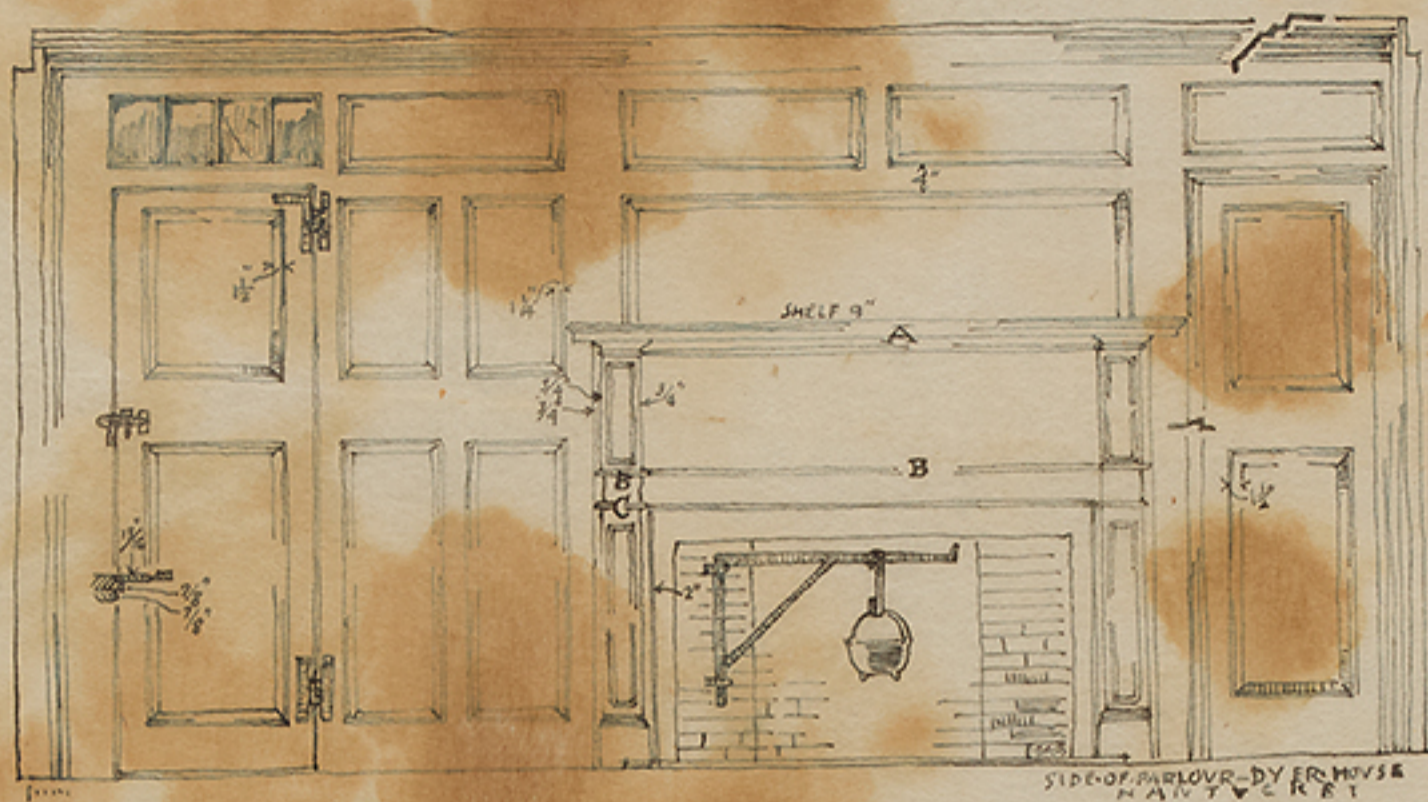


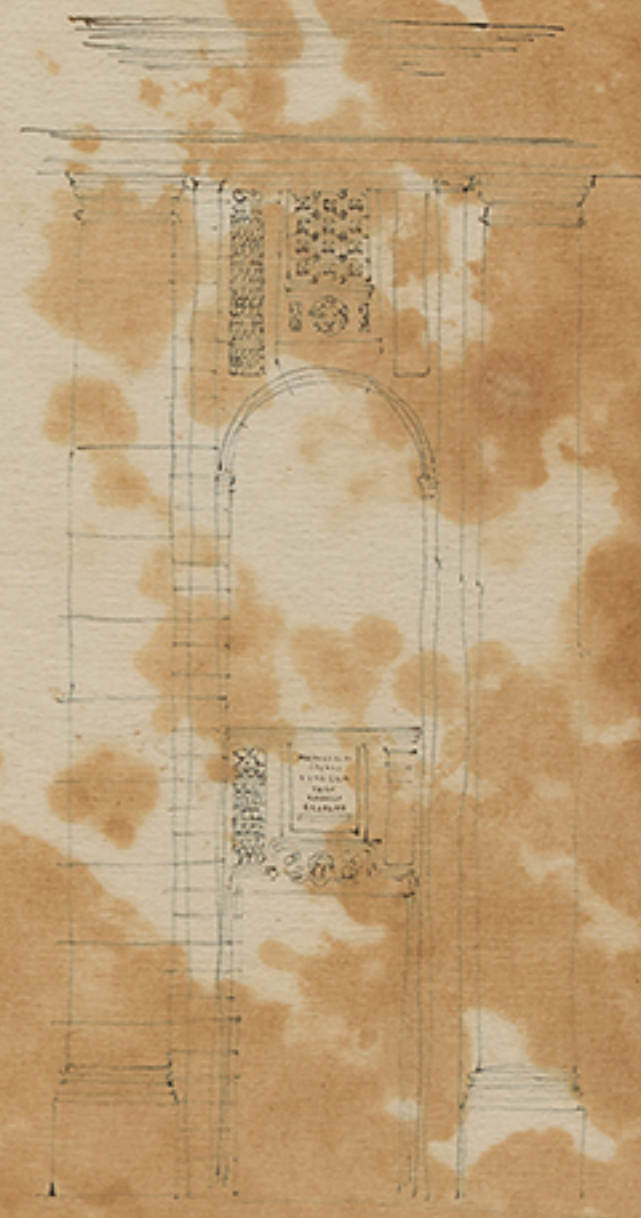






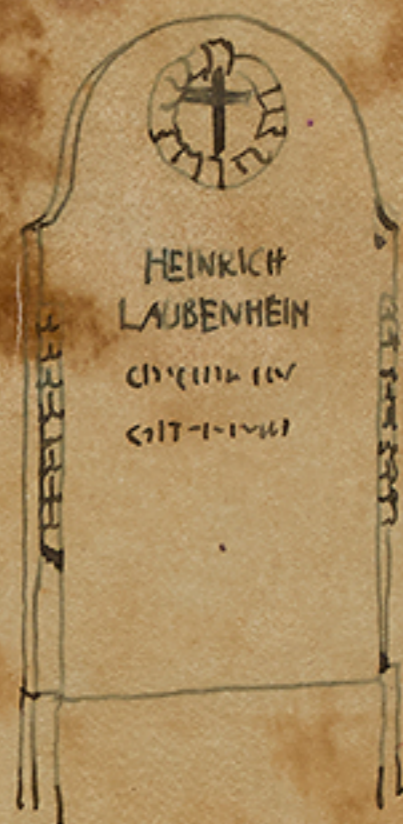


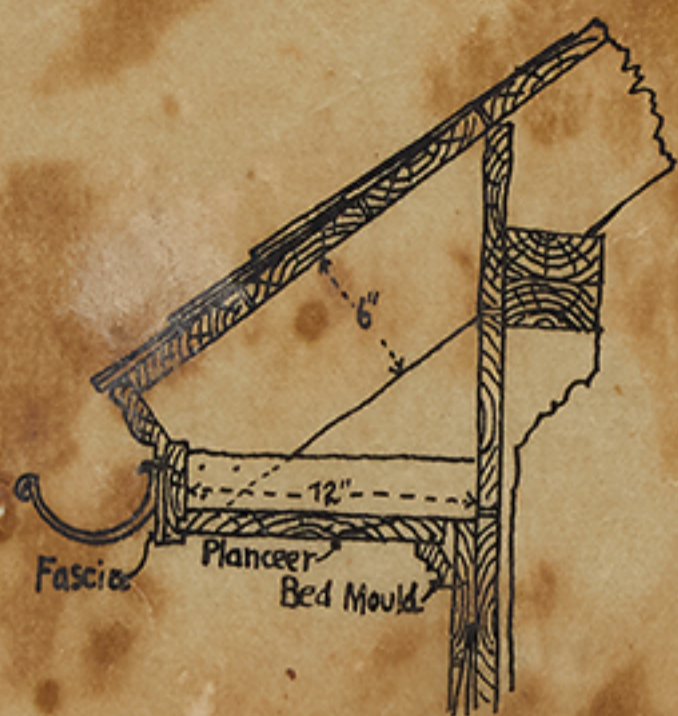


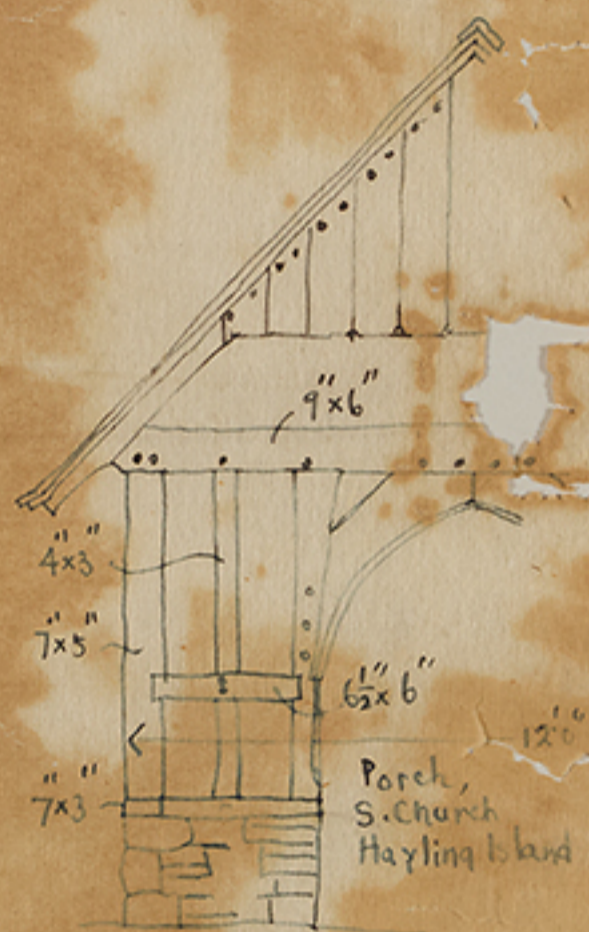
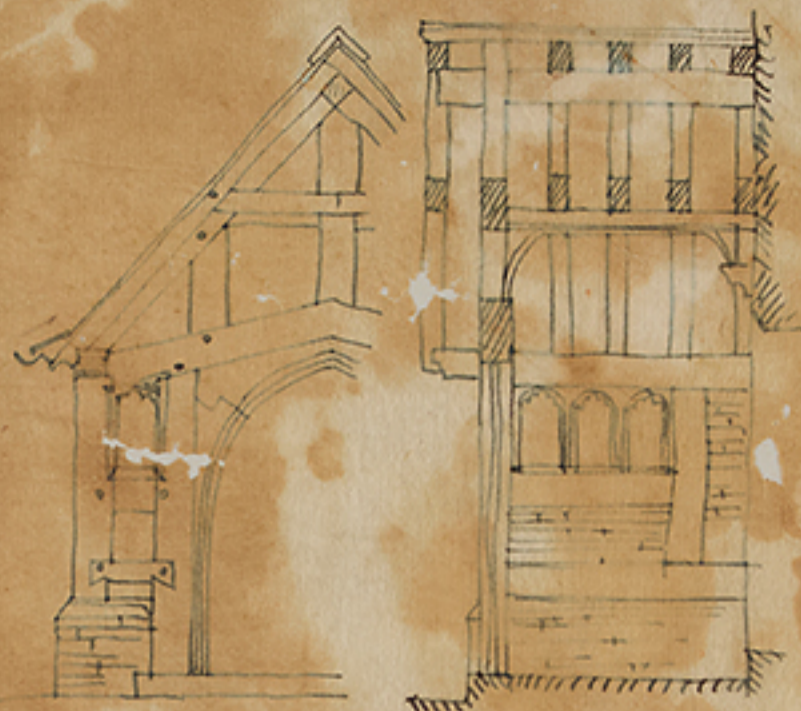


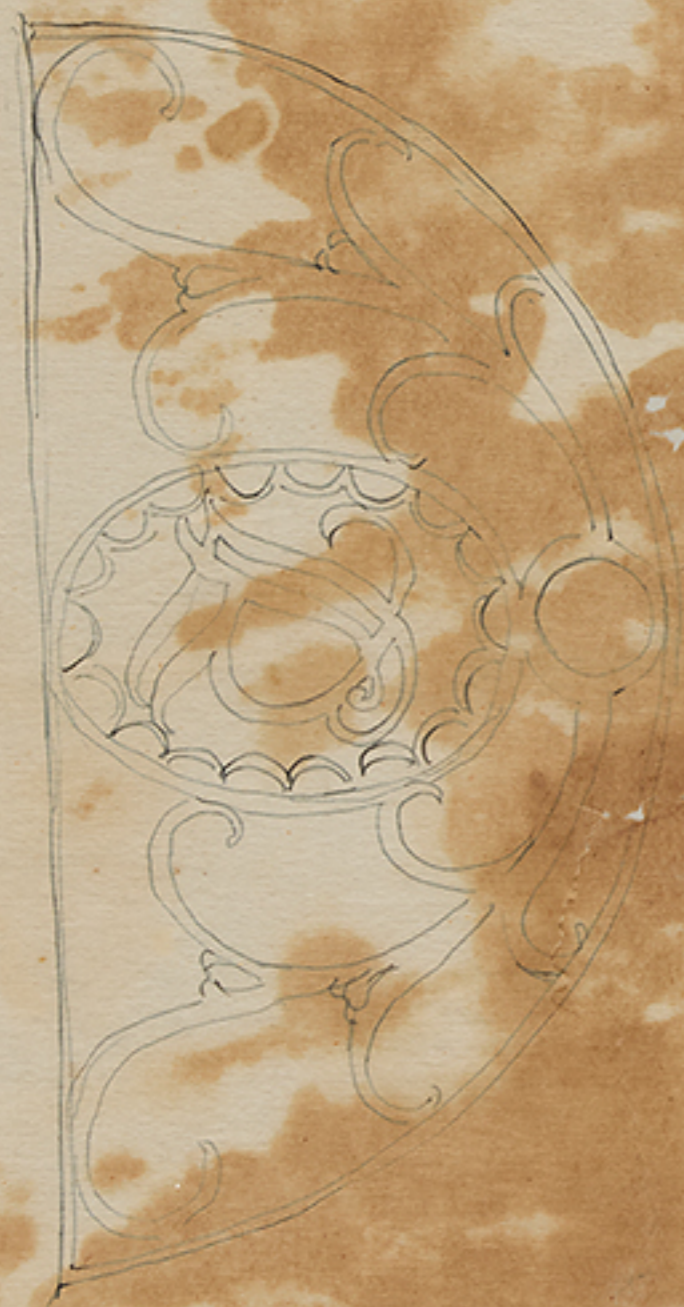
Berliner Architekturwelt 1911















Water works, Pohn



Grammar school, Artesia, Cal.



LIBRARY BUILDING

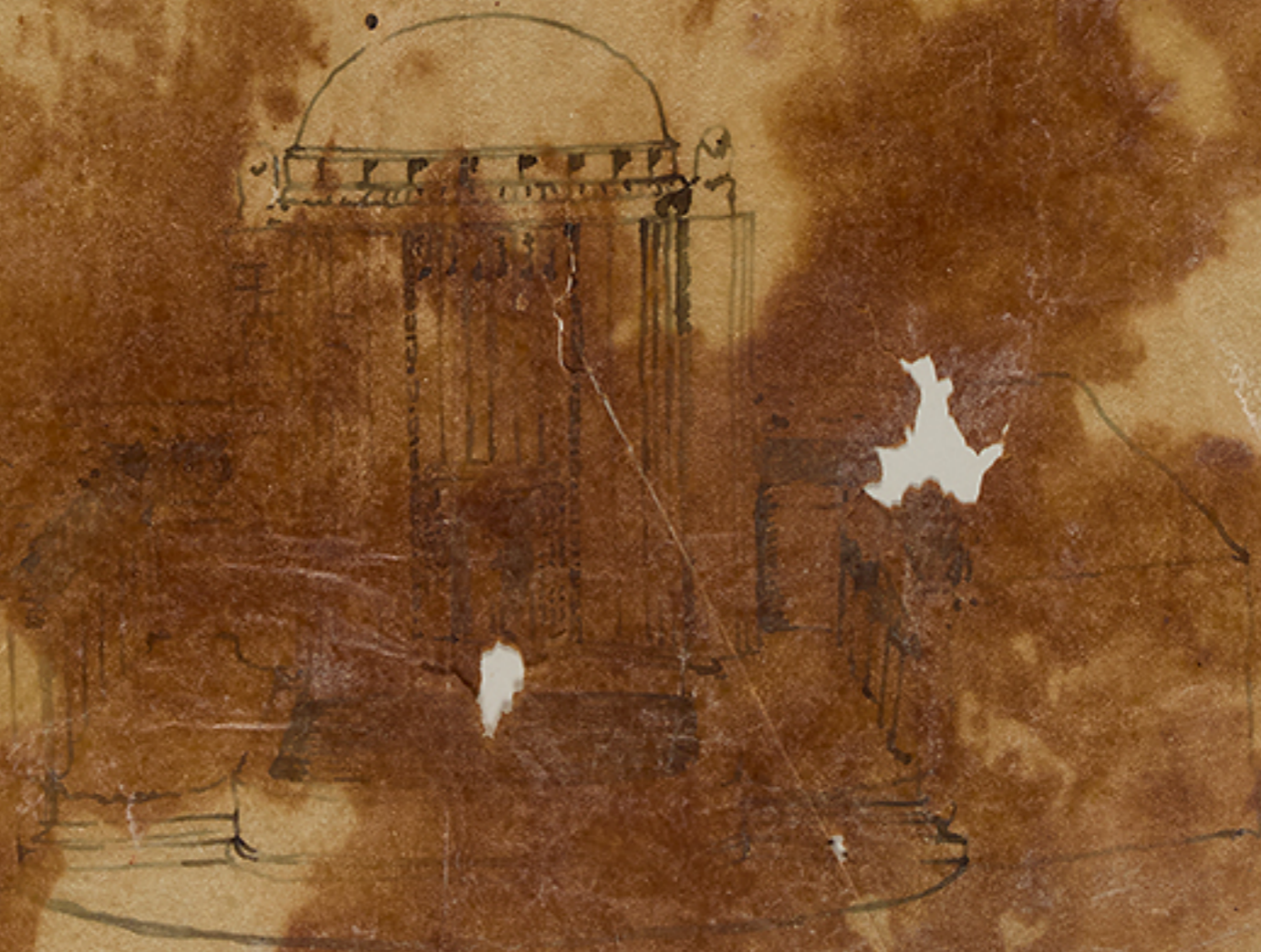


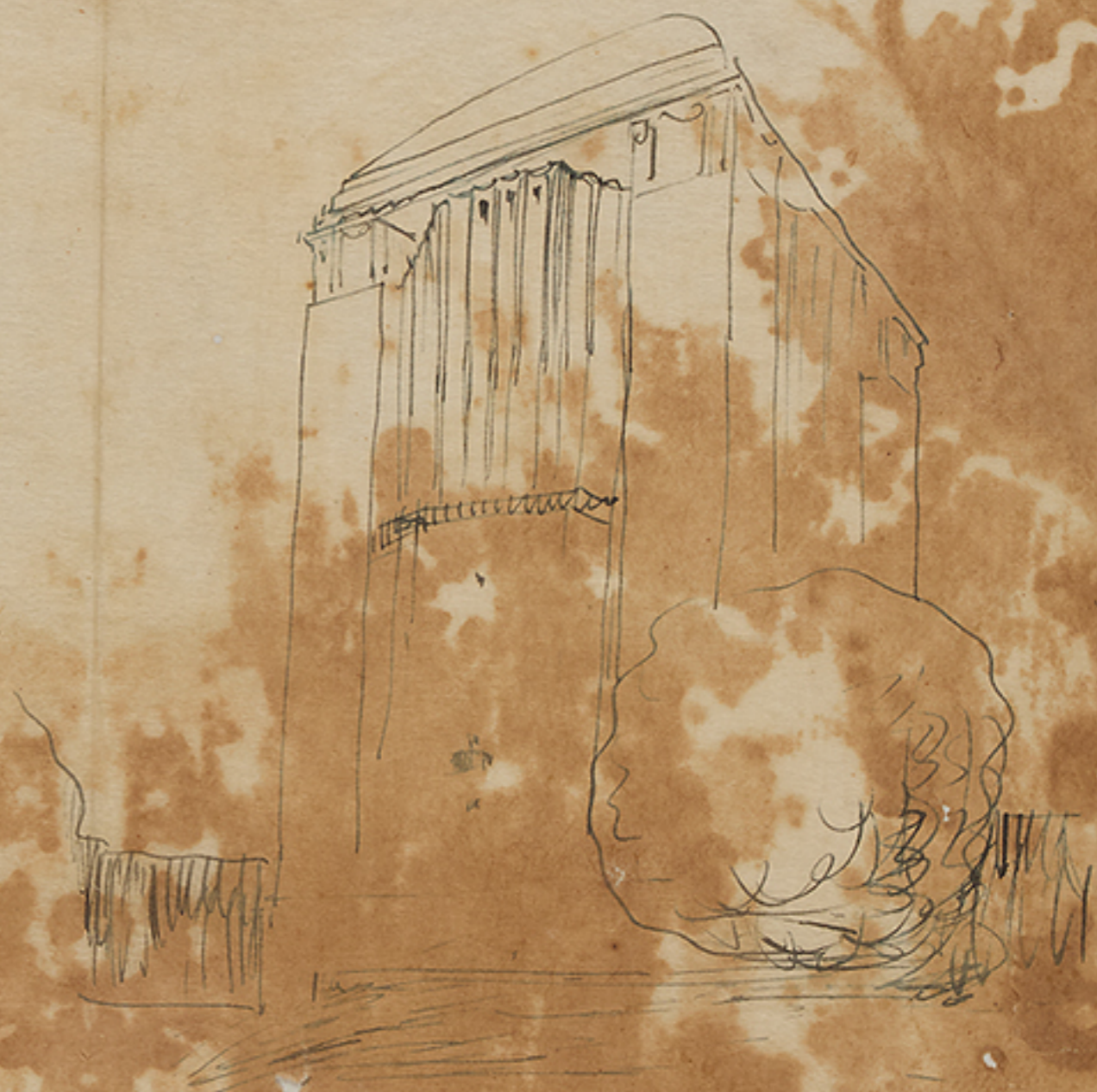
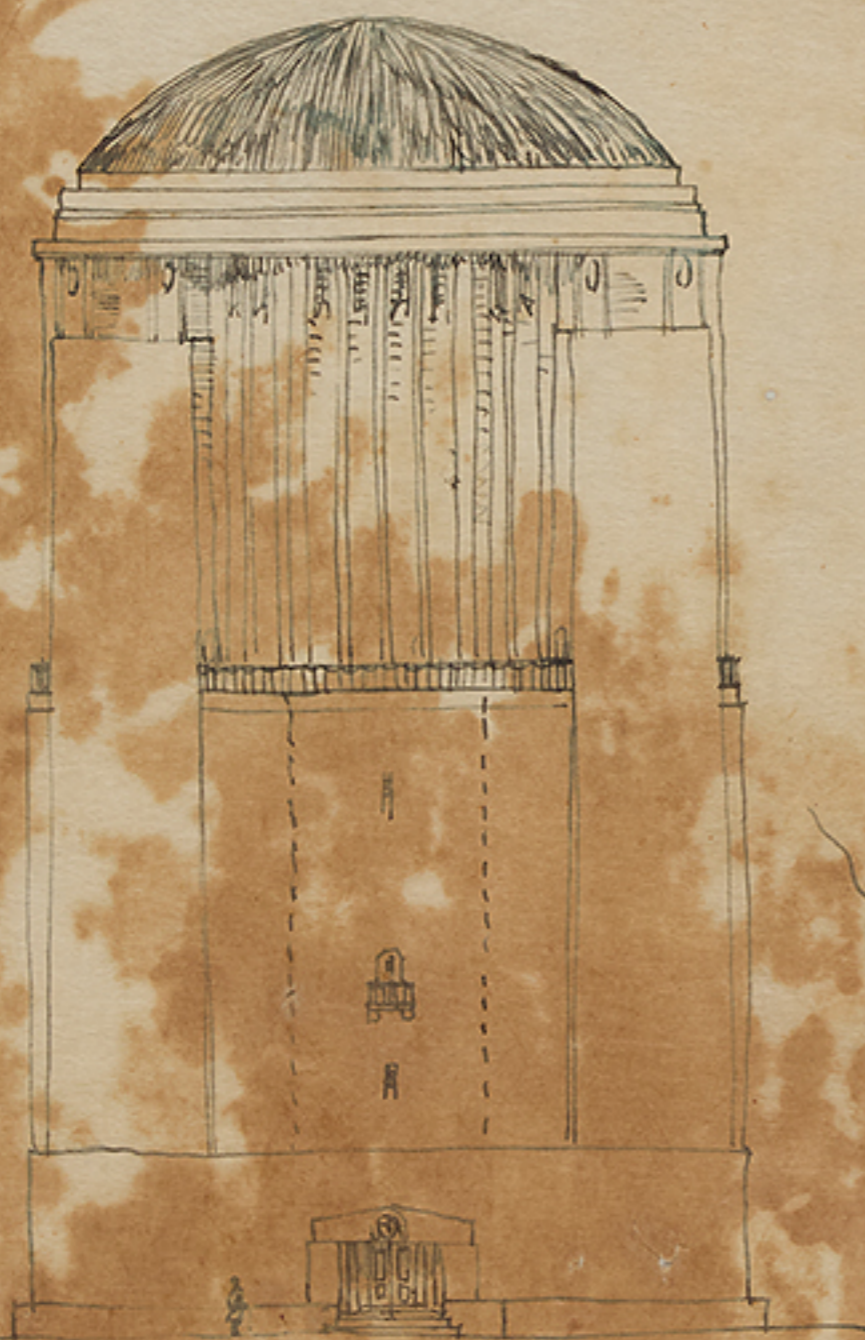
Polytechnic
High School



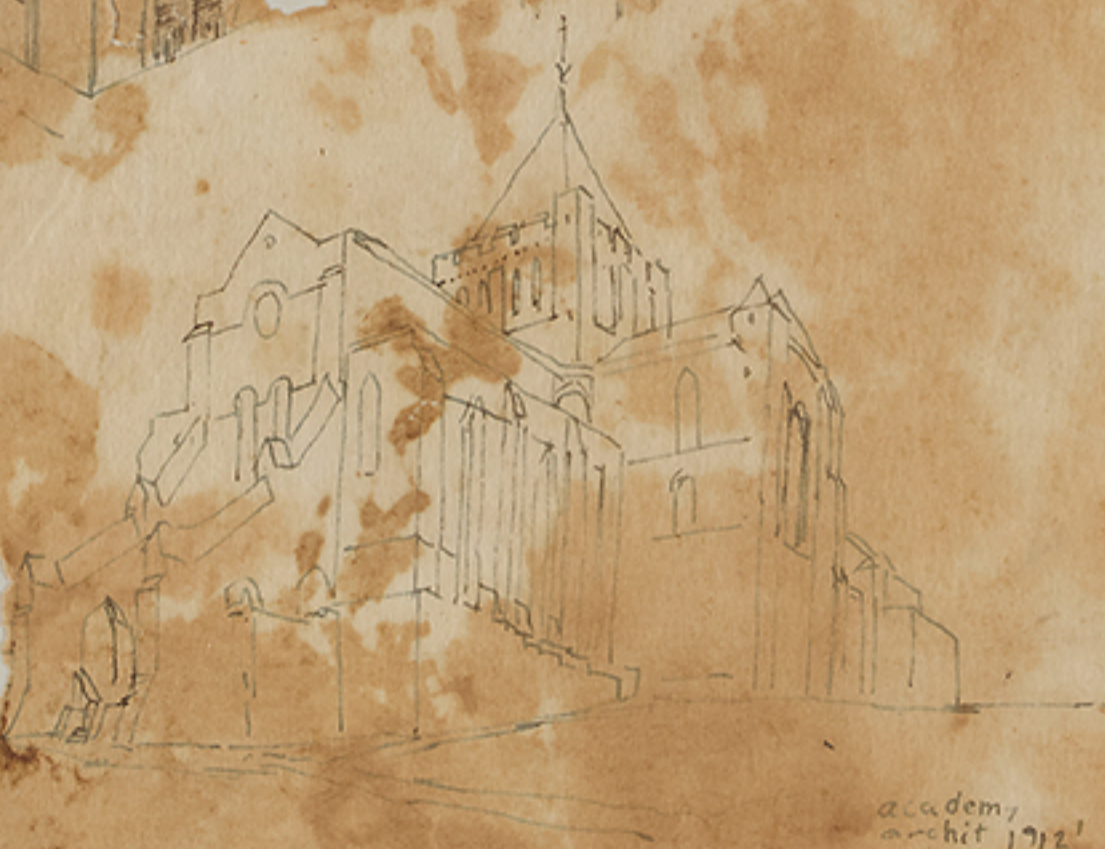
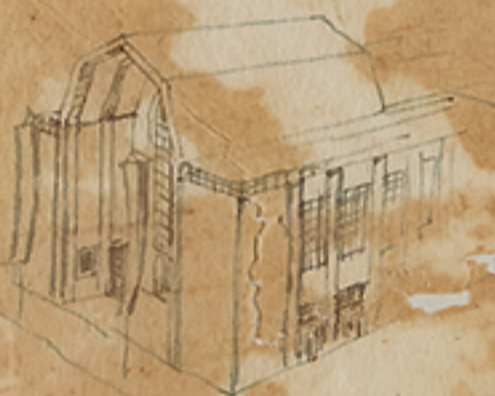
alt. 1/11/11

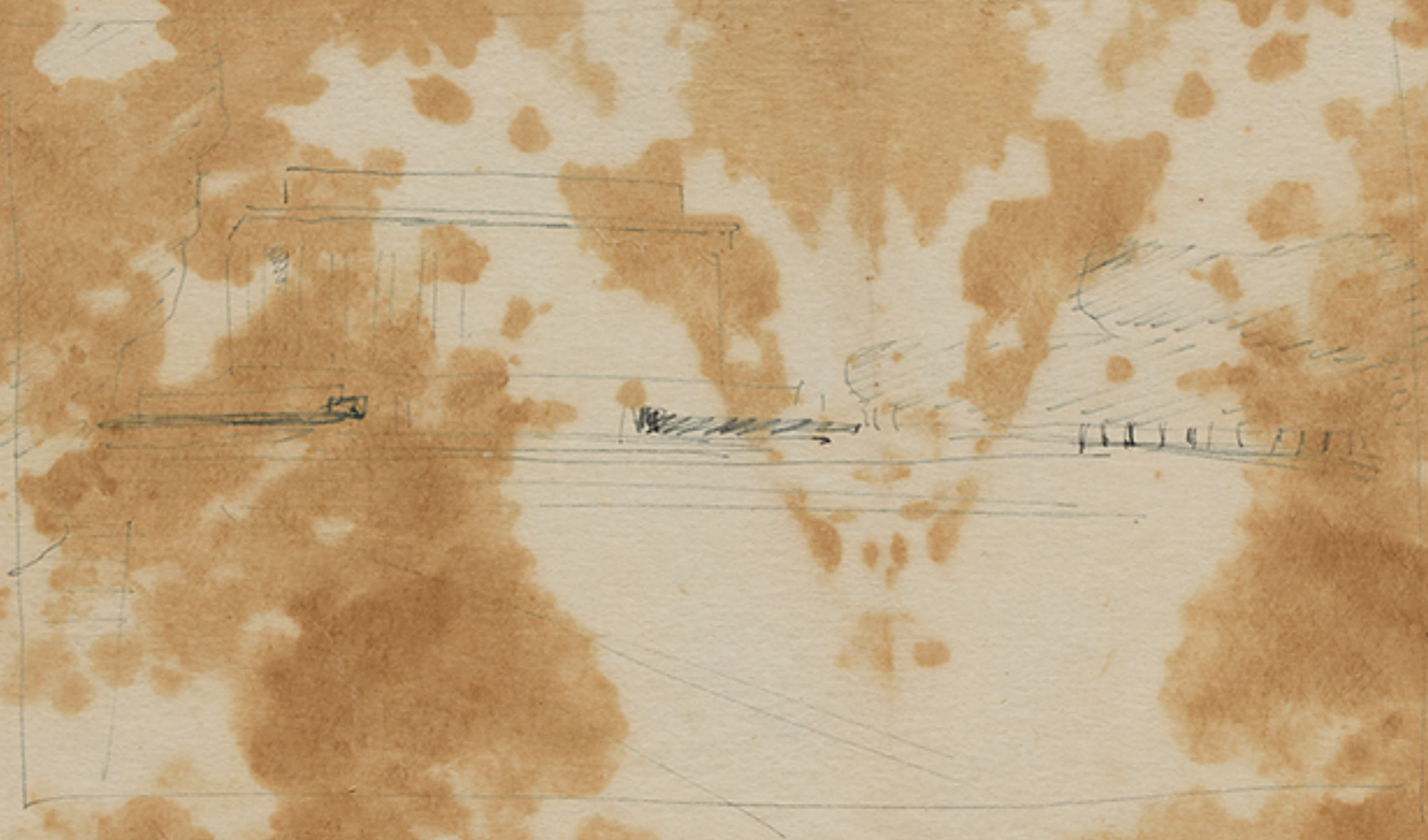
Strada ... Glendora, Cal. am. ... 1911

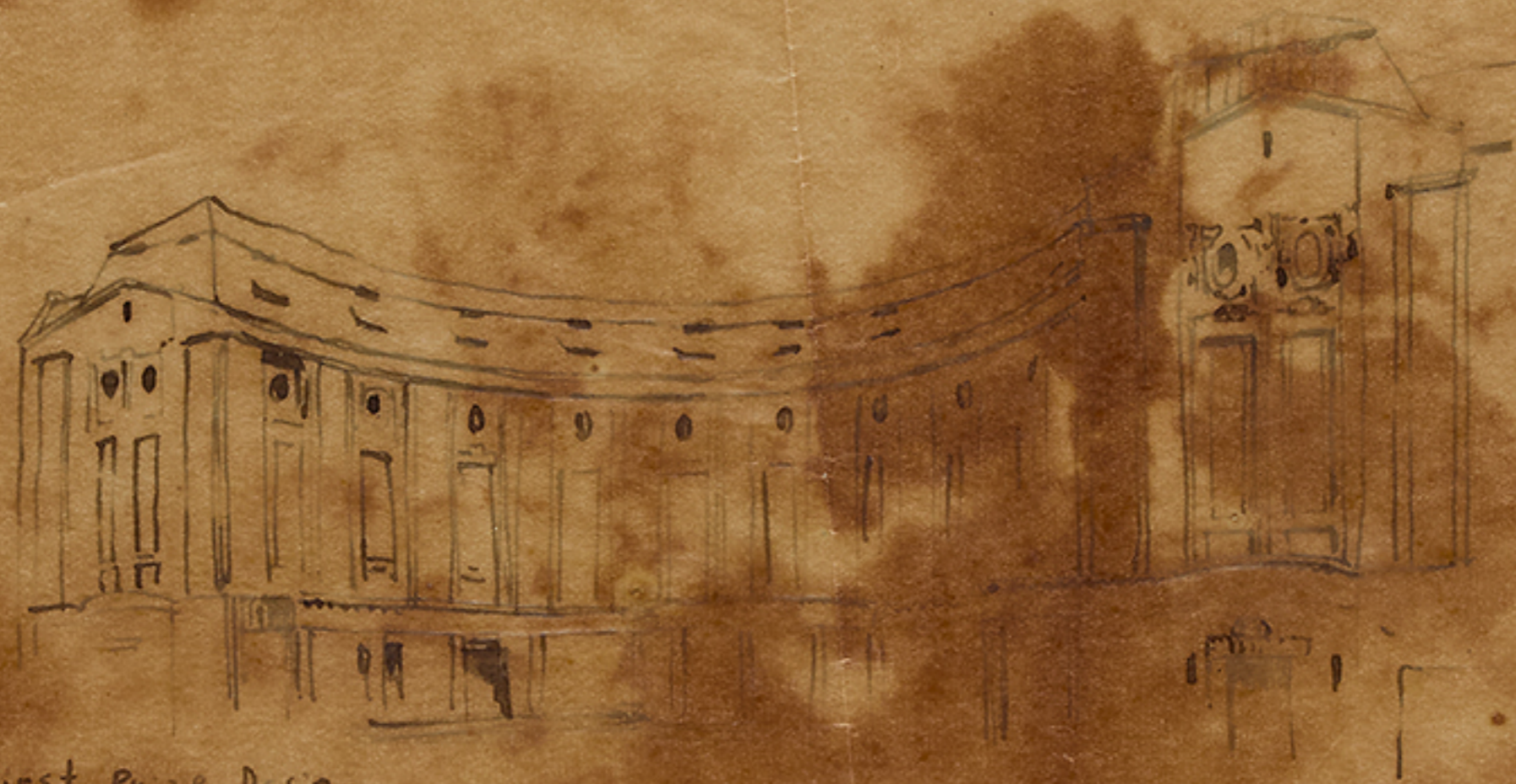






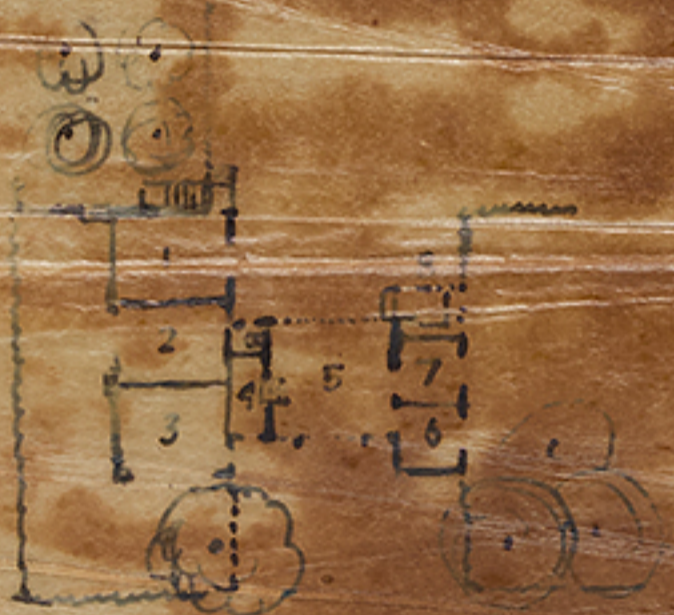




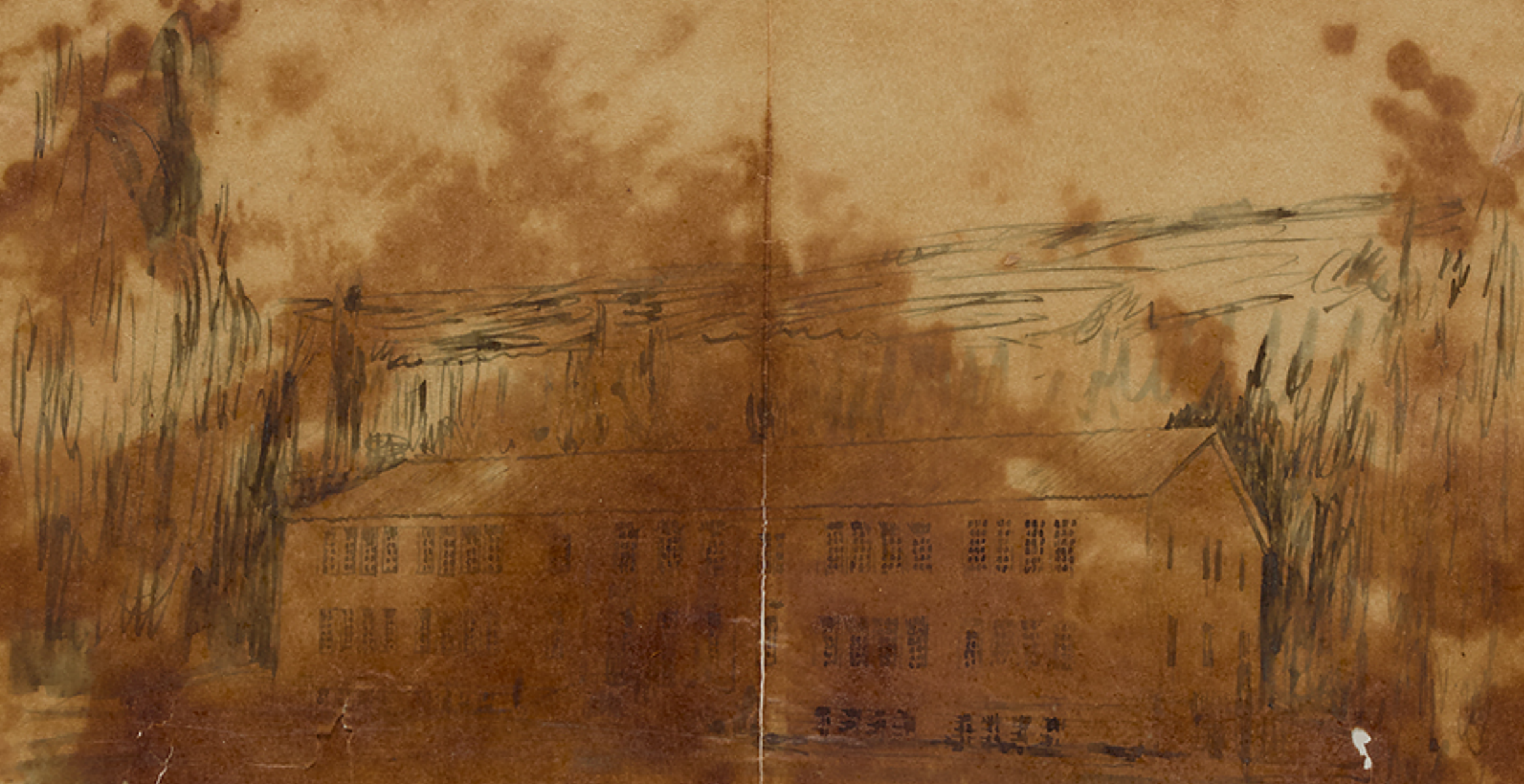


First Prize Design
Competition For the Grand
opera House, Charlottenburg





- 1. Schlafzimmer
- 2. Küche
- 3. Stube
- 4. Flur
- 5. Überhöhte Einfahrt.
- 6. Veranda
- 7 "
- 8 Sitzplatz

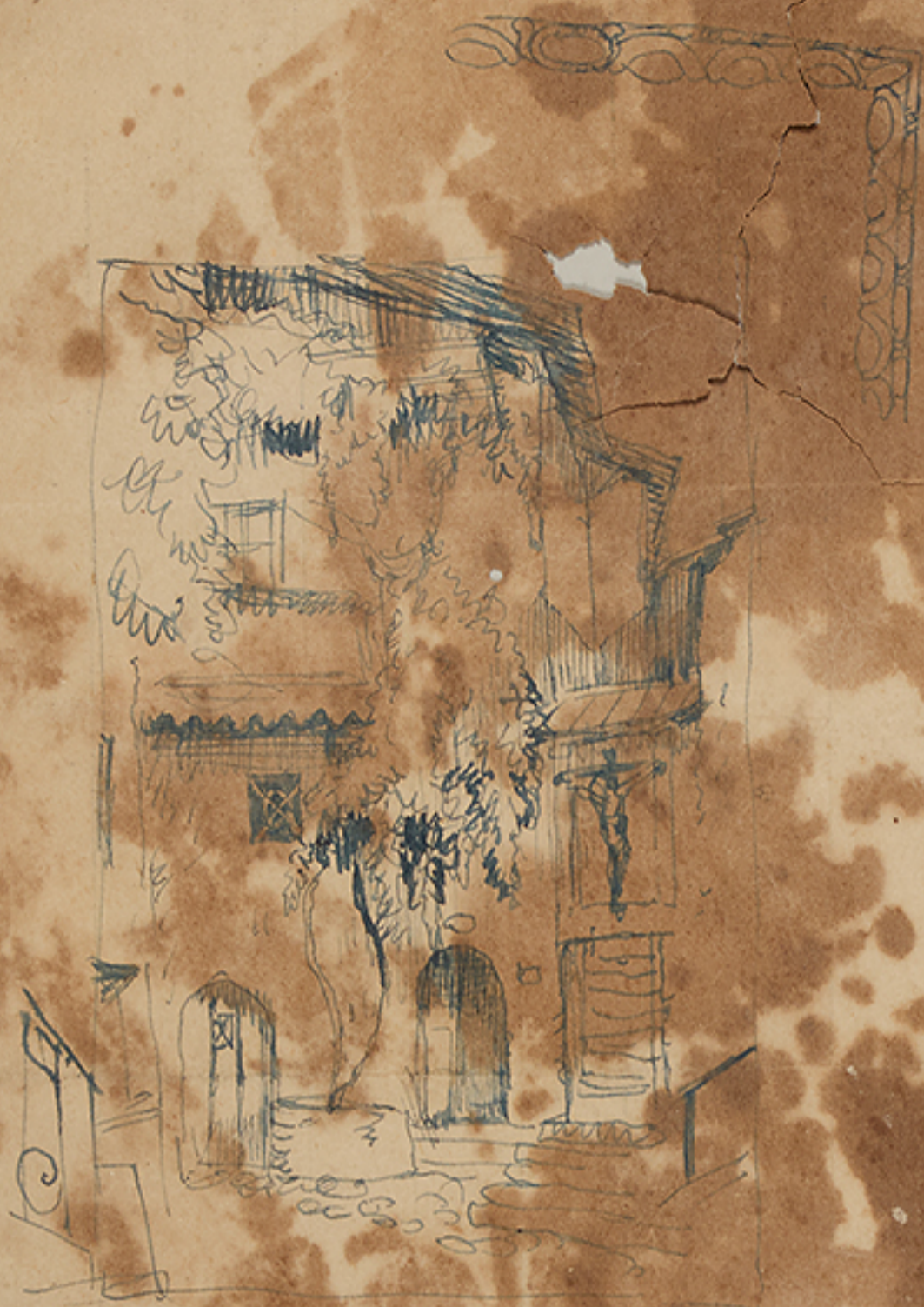


HIGH SCHOOL BUILDING -
SANTA PAULI CALIF.
ALISON & ALLISON WIGHTS. L. S. Angeles.









No.

大正 年 / 月 日

高橋 野田 可仕

愛知縣知多郡西浦町大字西阿野

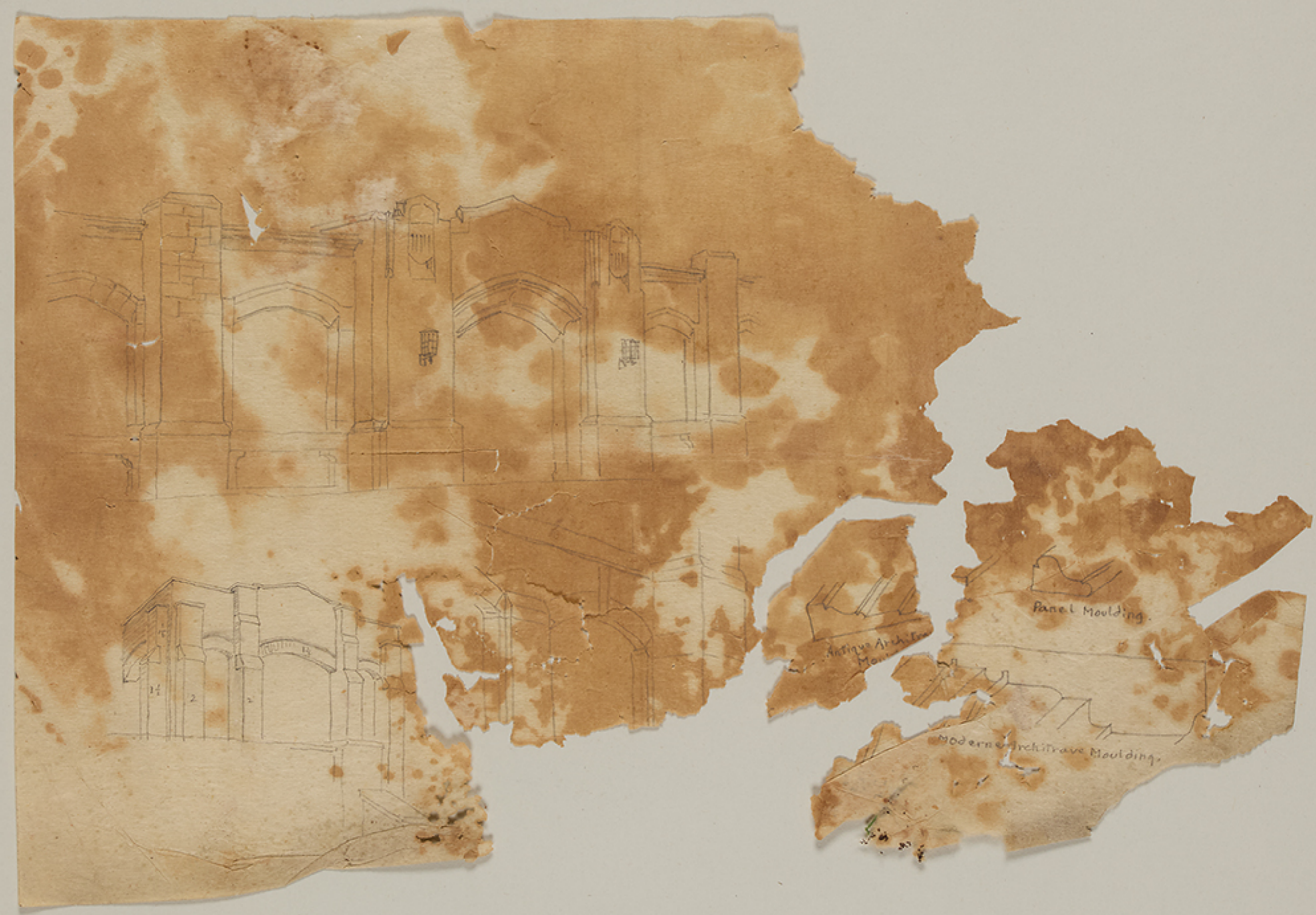
セラコッタ
煉瓦
製造販売

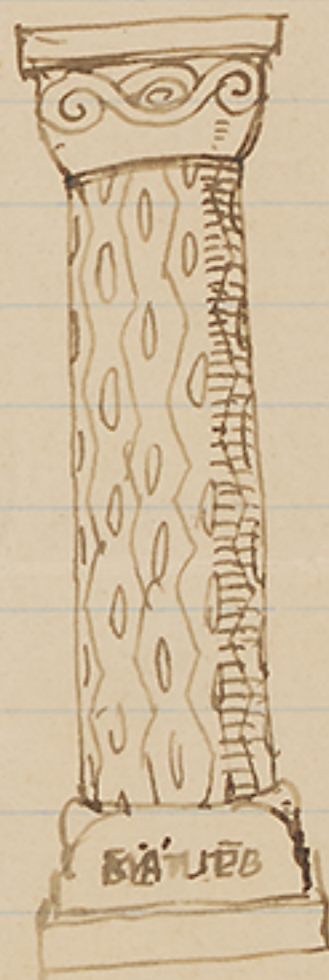
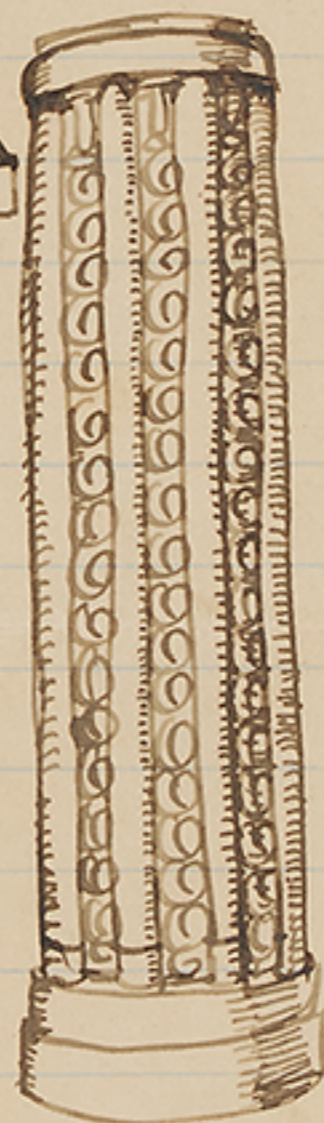


建

陶社

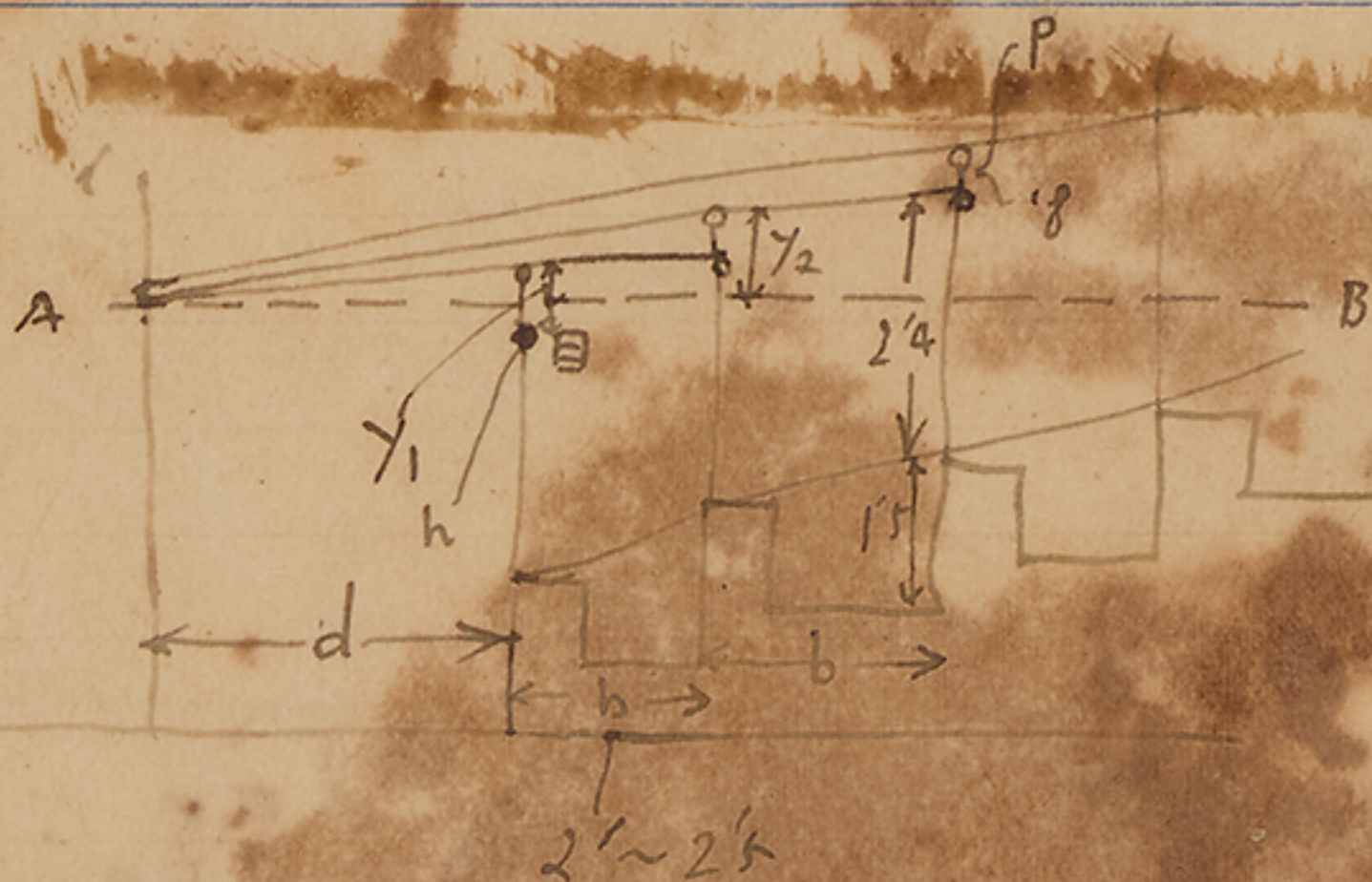
電話 三三四番
振替 大阪一六八四二番











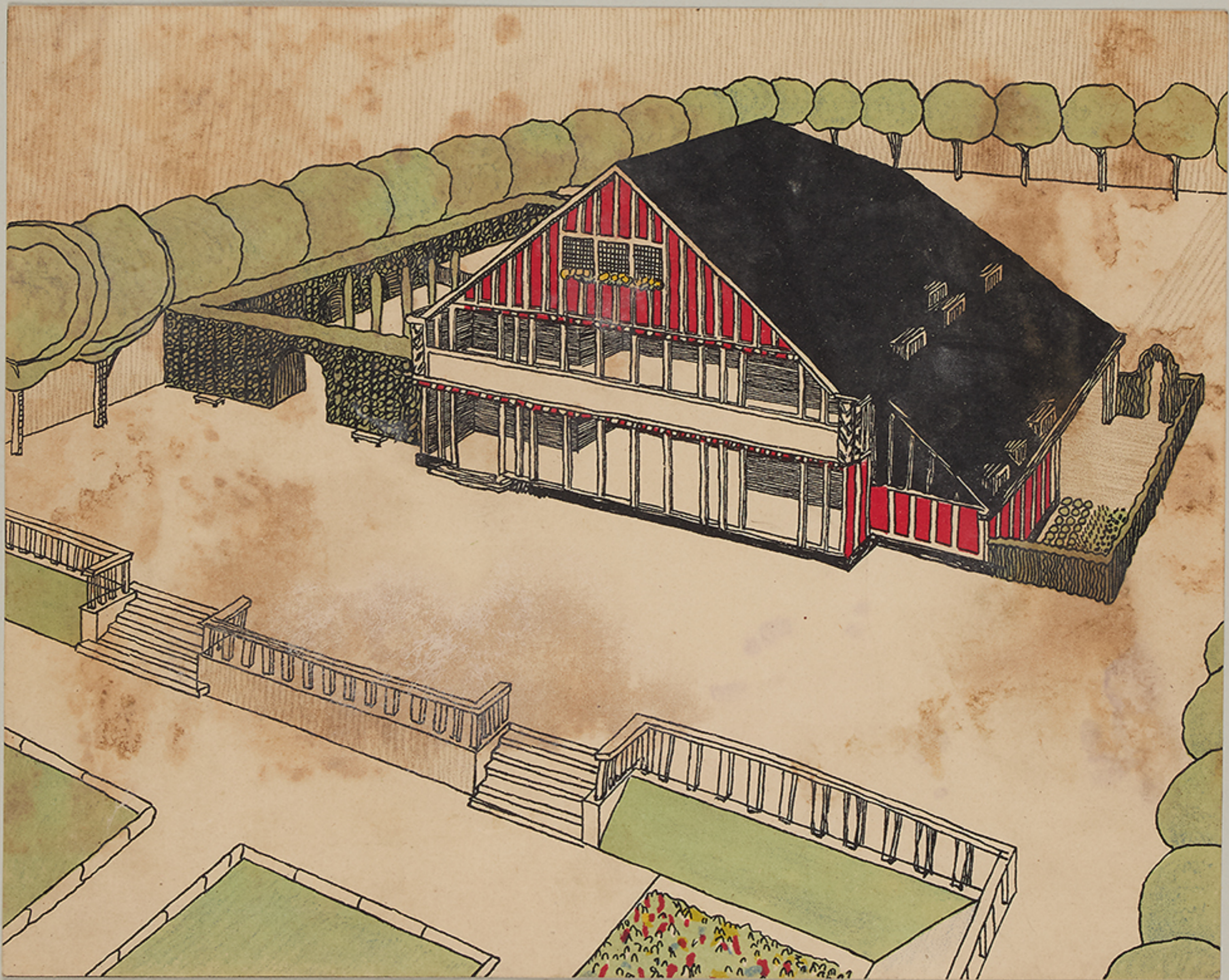
$$y_n = \{(n-1)b + d\} \left\{ \frac{1}{d}(h+p) + p \left(\frac{1}{d+b} + \frac{1}{d+2b} + \dots + \frac{1}{d+(n-2)b} \right) \right\} + p$$

$$y_1 = h + p$$

$$y_2 = \frac{b+d}{d} (h+p) + p$$

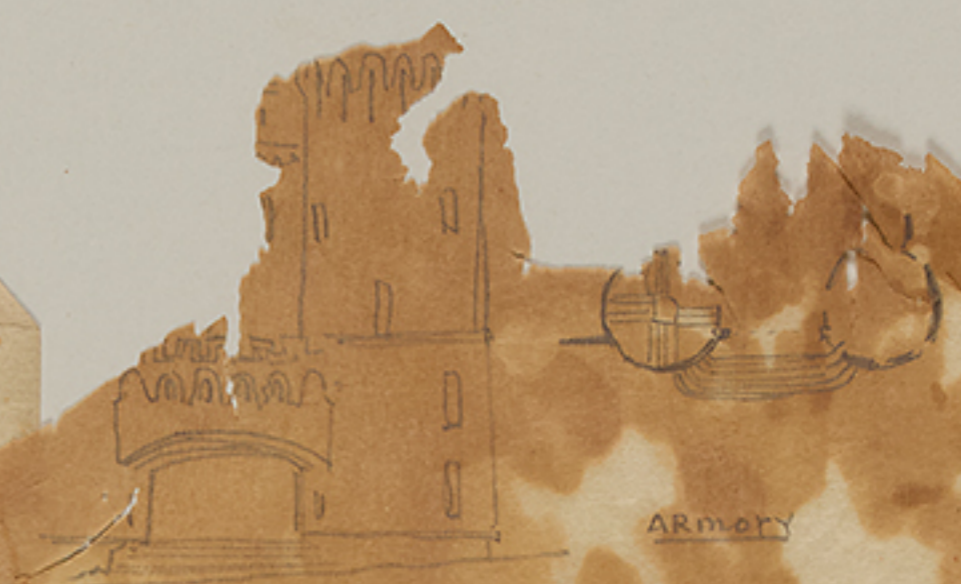


この場合課力点^が梁の断面の内に

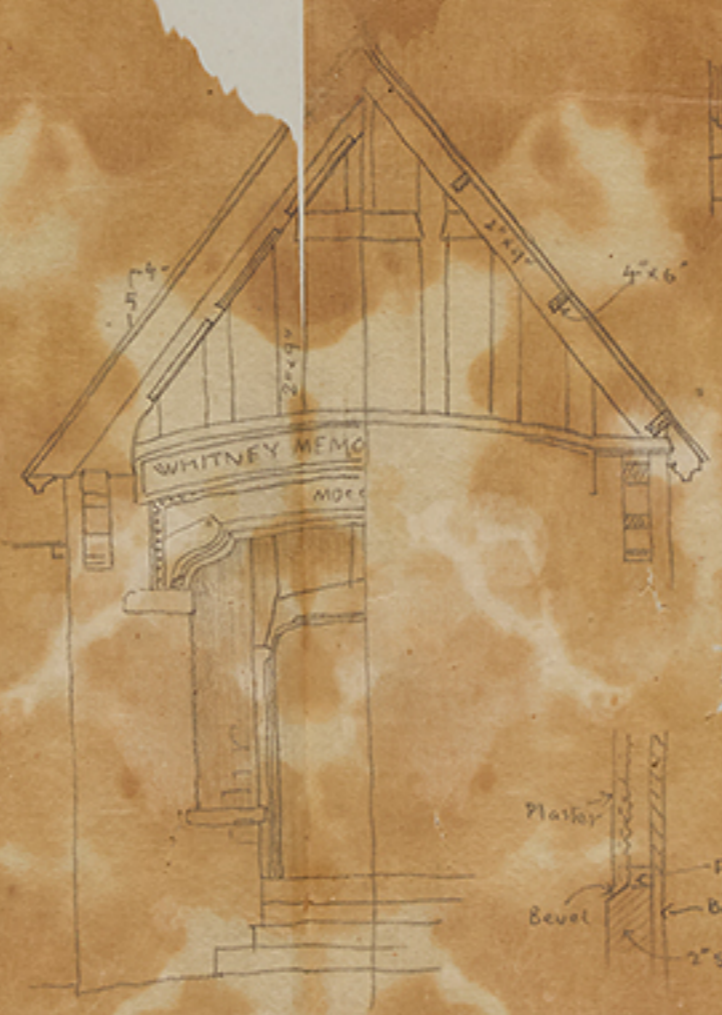








ARMORY



American Architect
Vol LXXVII No 1576
March 10, 1906



Whitney Memorial Library.







CORNER BAR NO. 5
FULL SIZE



CORNER BAR NO. 10
FULL SIZE



A CORNER BAR



A DIVISION BAR

In the setting of lights in stone it is usual to bed them in a marble cement instead of putty, the cement commonly used being about as follows:

Sand	60	parts
limestone	20	"
litharge	10	"
linseed oil	7	"

all-glass
system



Single Glazing
Basic Details for Stone openings, Loose Strips.



Double Glazing



MEDIUM DIVISION BAR FOR FRAMING.



GLAZING

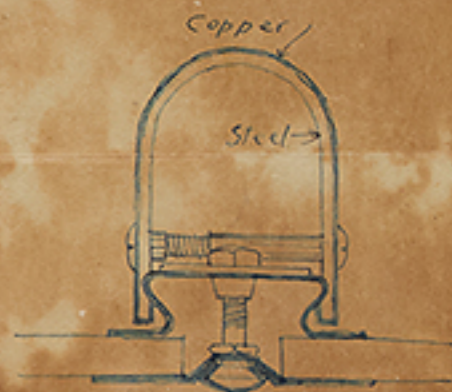
DETAILS



STONE DETAIL FOR HEADS & SILLS



FOR SILLS & SHOWING VENTILATOR SETTING.



KAWNEER DIVISION BAR No. 218



1916



Ansello's Church Font



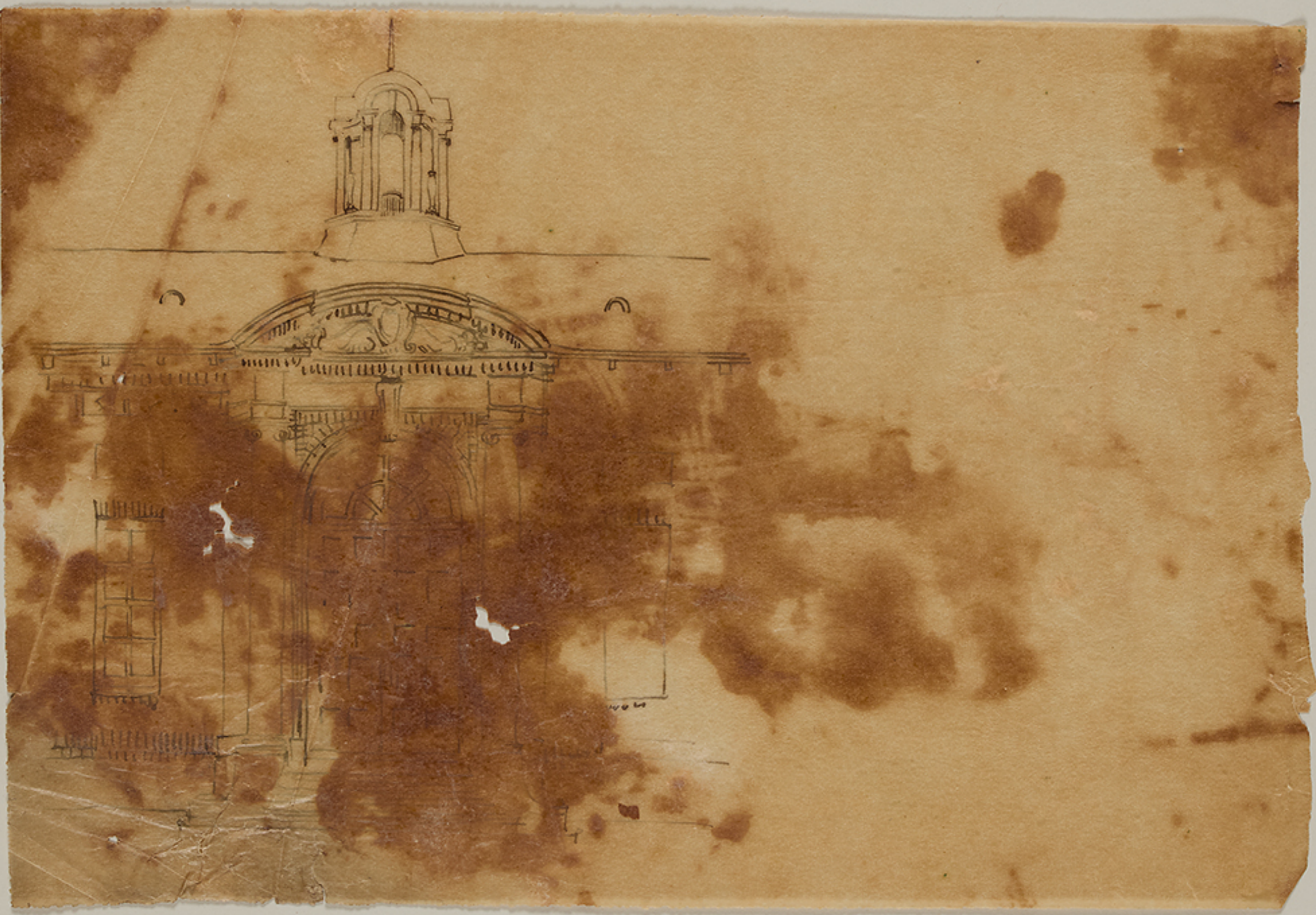
Liskeard Congregational

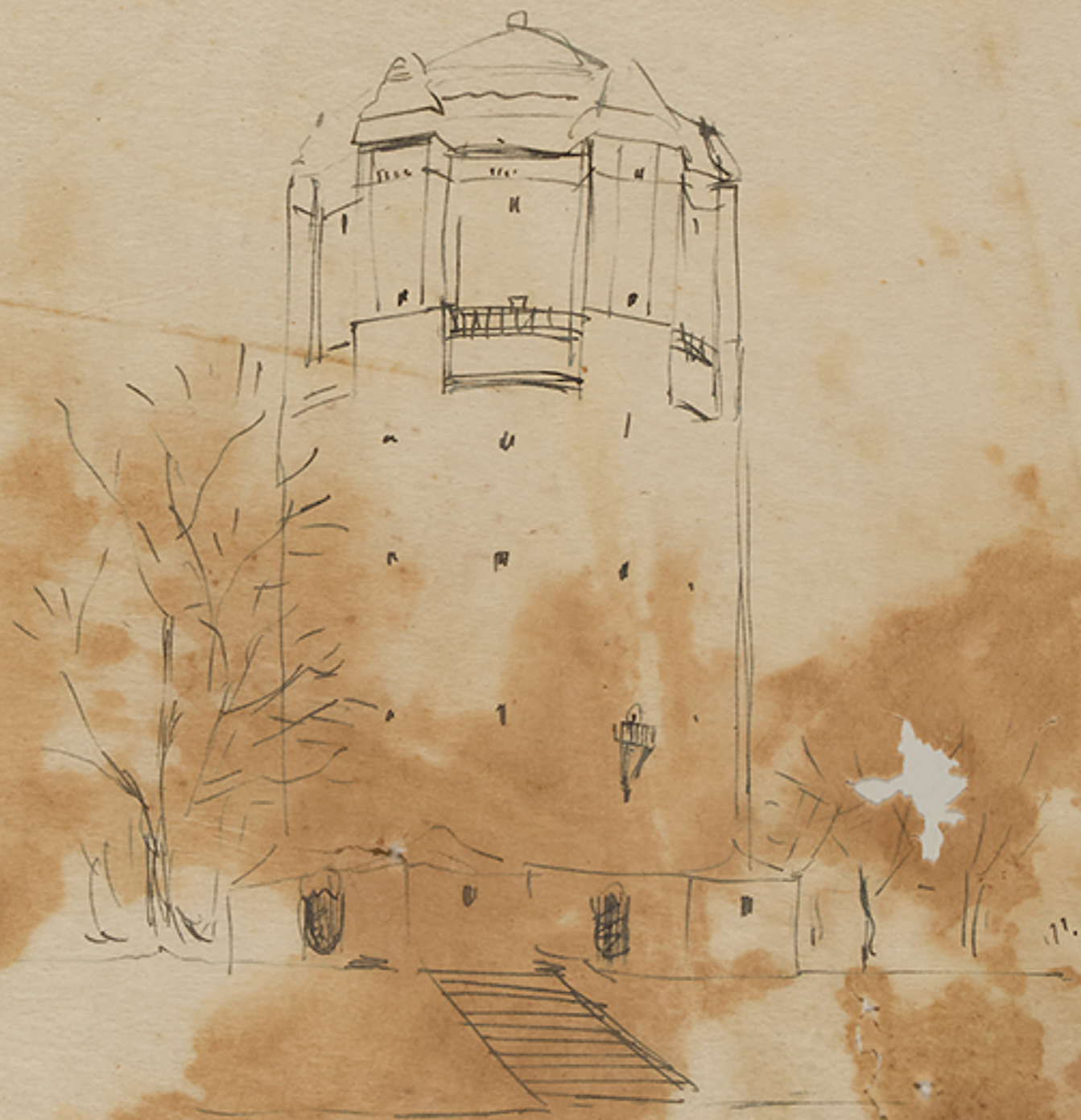


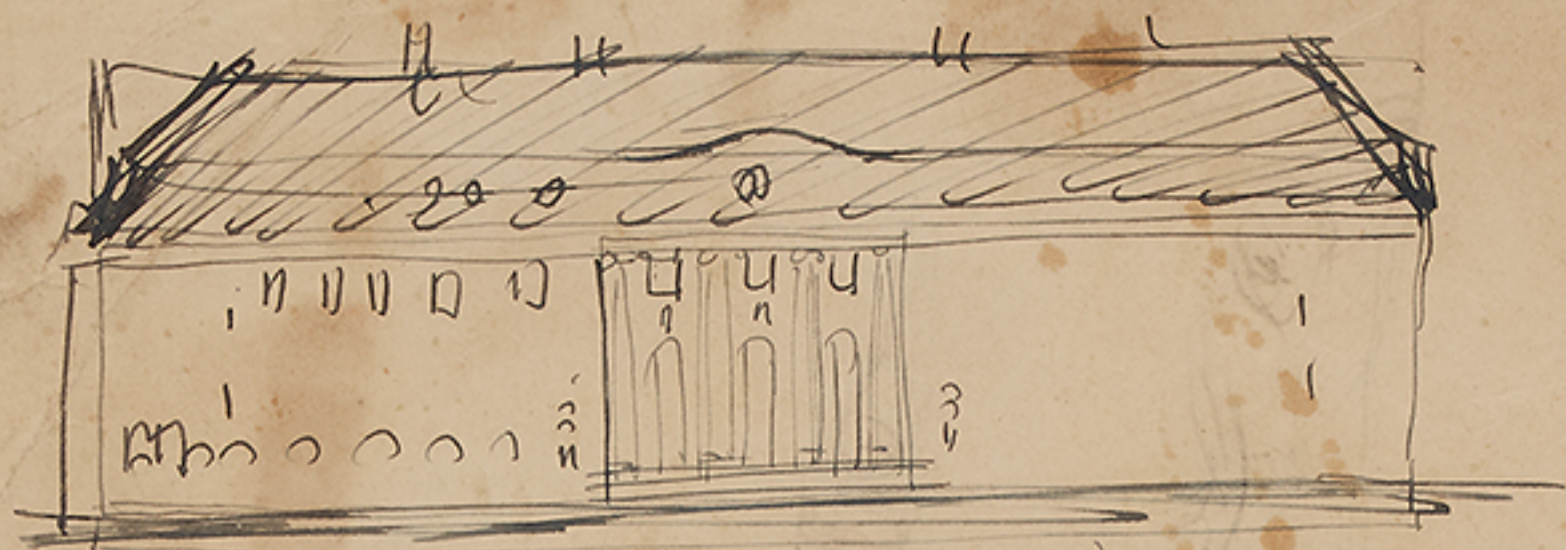
"step" at
base
of
Font



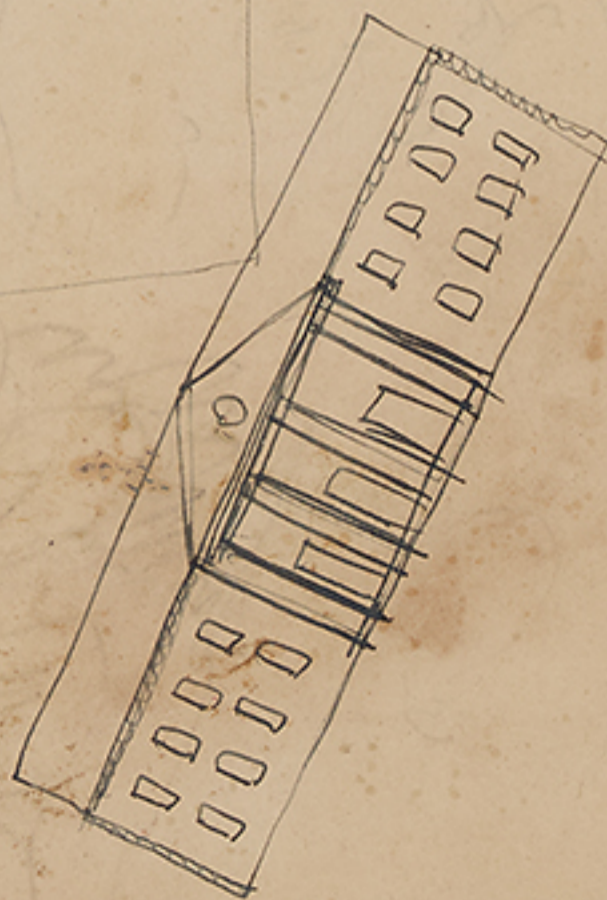
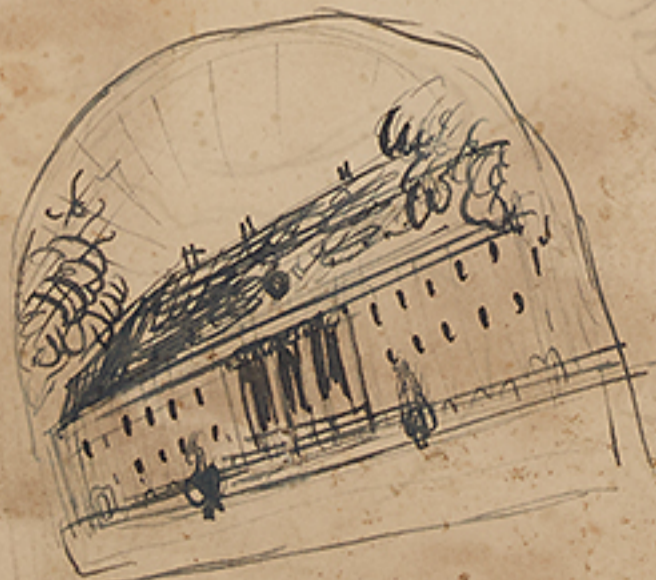
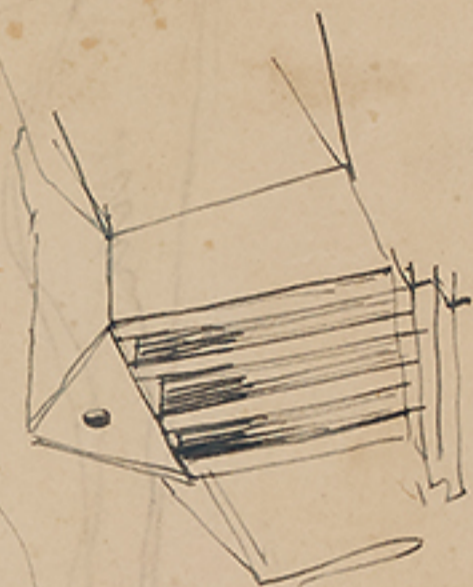


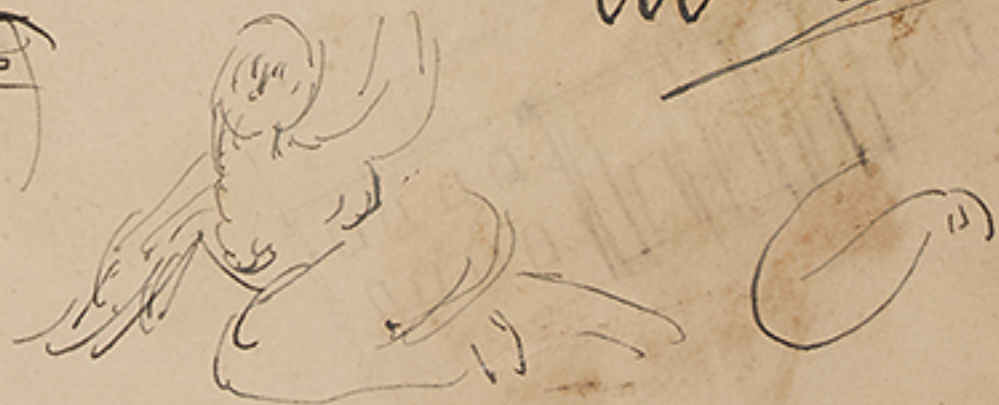




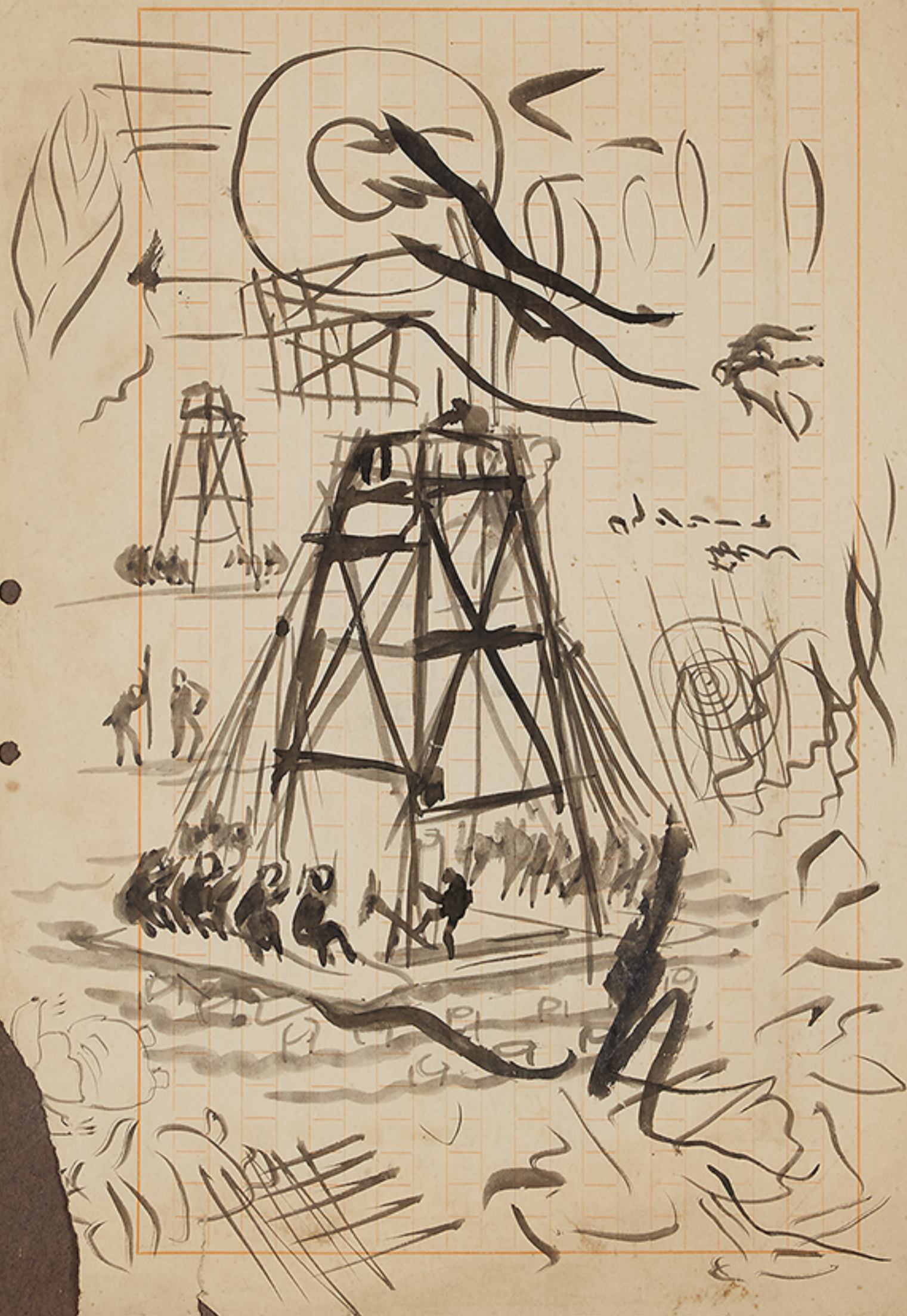


a
Architecture

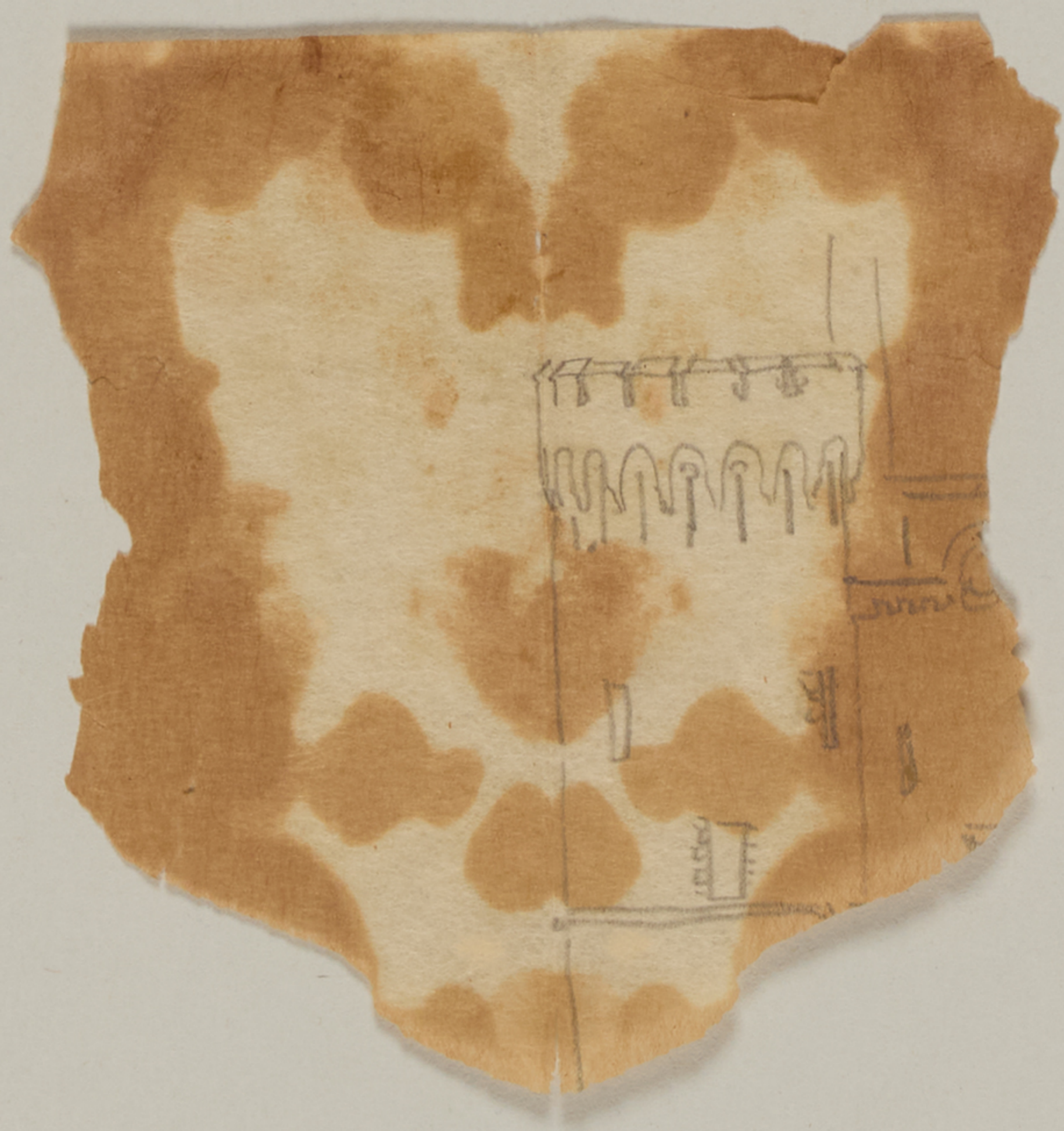




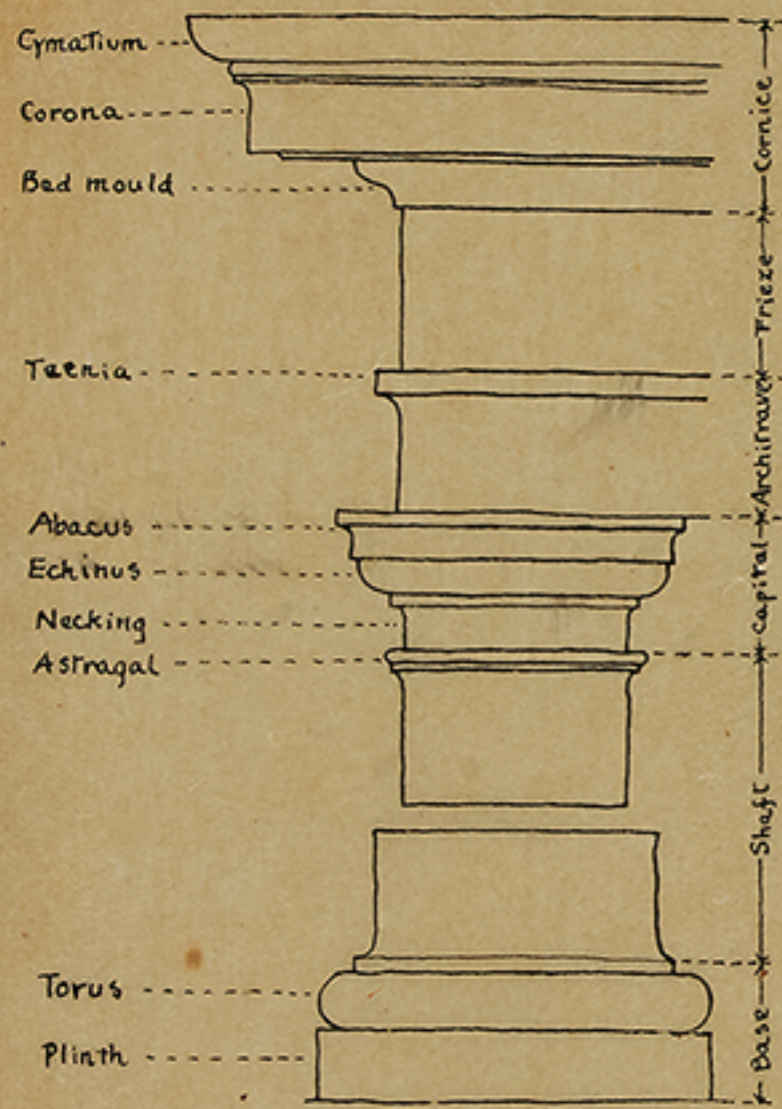




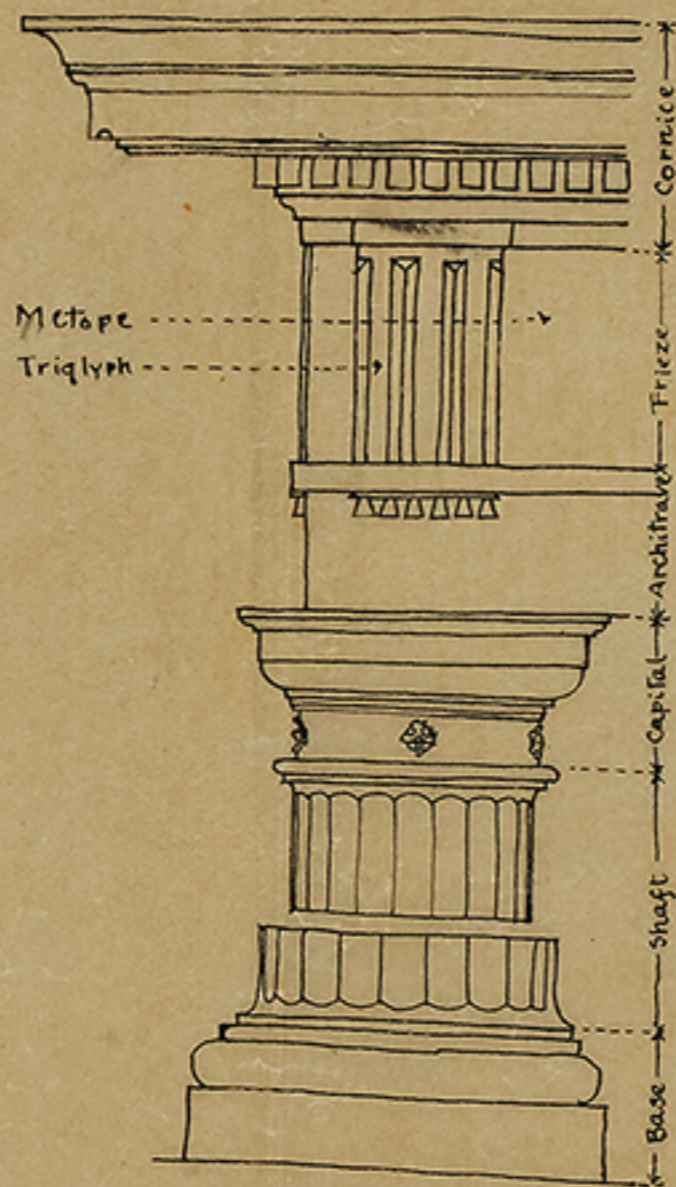




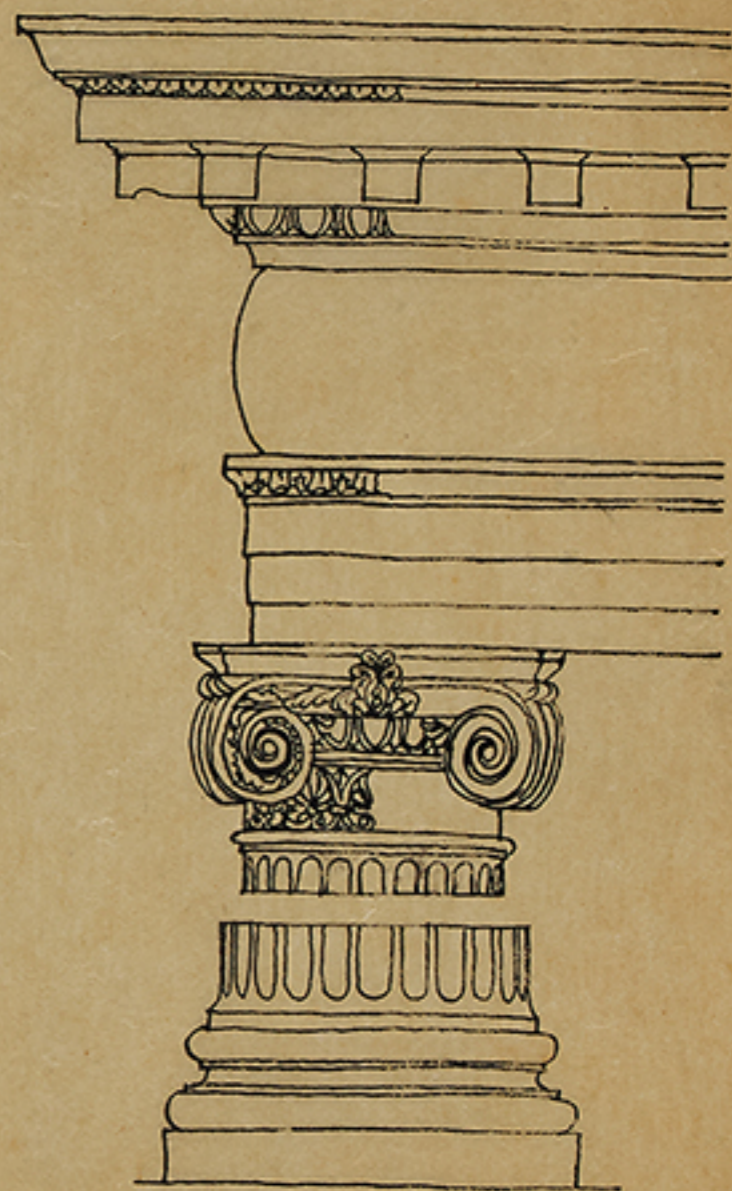




The Tuscan Order.



The Doric Order.



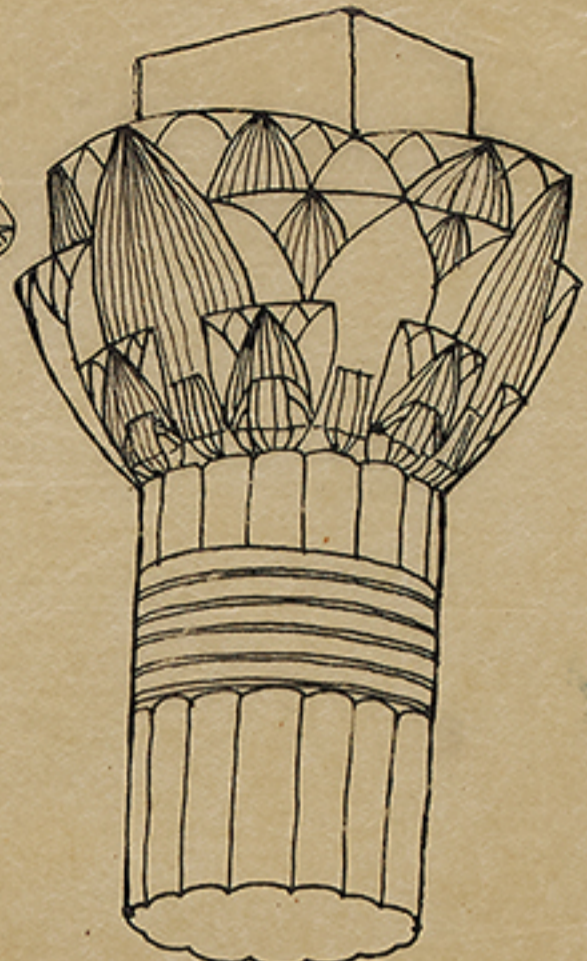
エ
ジ
プ
ト
柱
頭



Lotus Bud
(A)



Palm
(C)



Lotus Flower
(E)



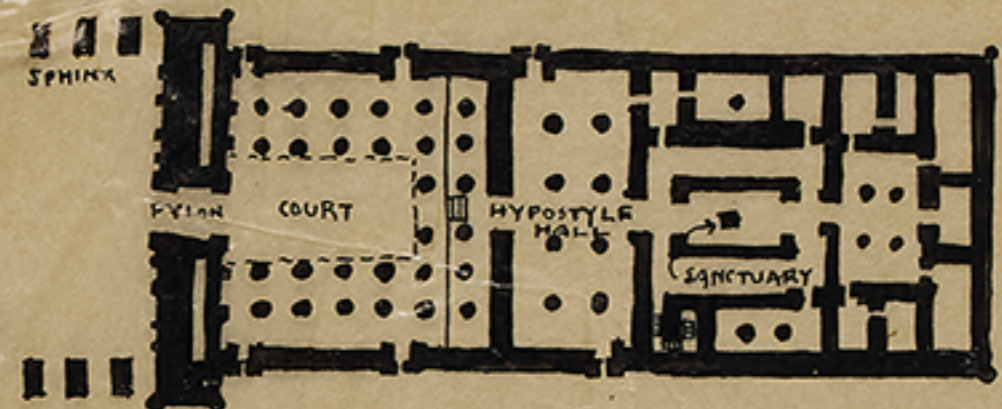
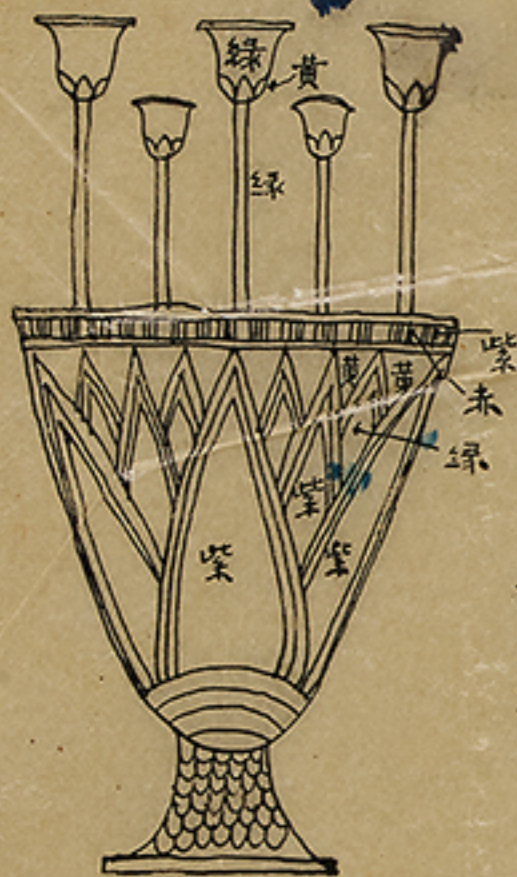
Lotus Bud
(B)



Lotus Flower
(D)



Isis Head
(F)



Konsu Temple, Karnak.



Sphinx in Granite



A winged sun

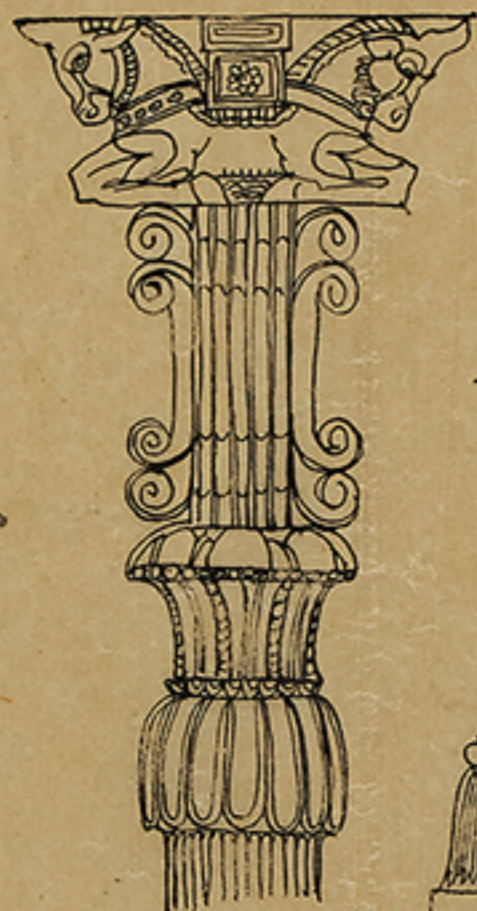


A Vulture with outstretched wings.

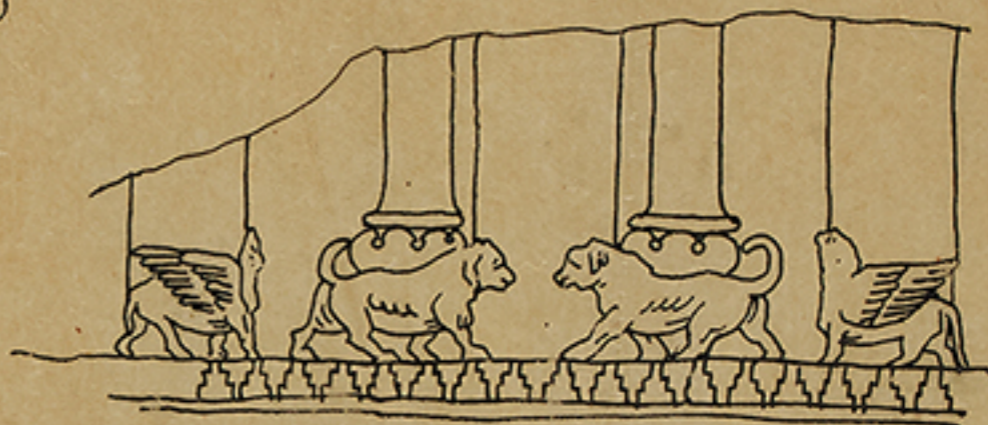


Egyptian.

Assyrian.



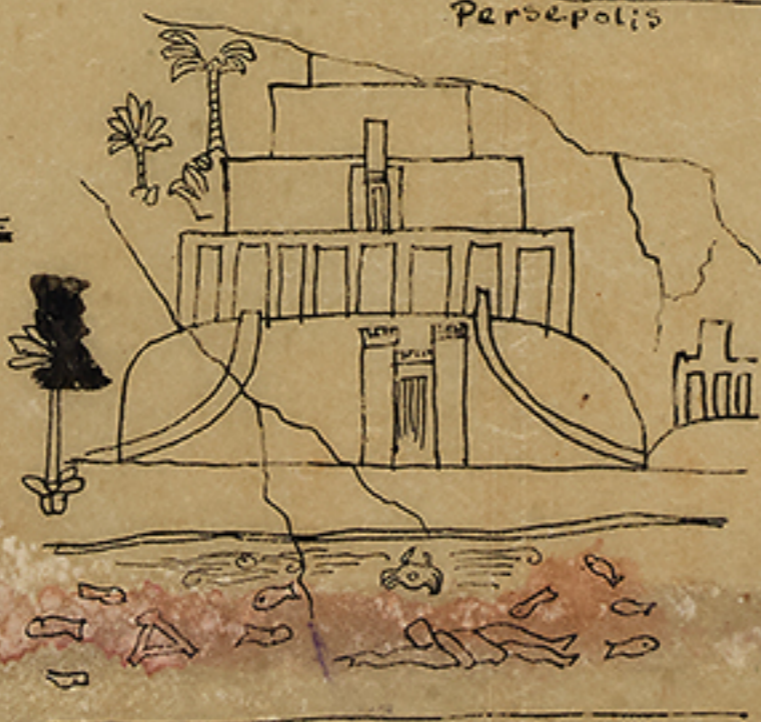
Persepolis



Chorsabad



Chorsabad



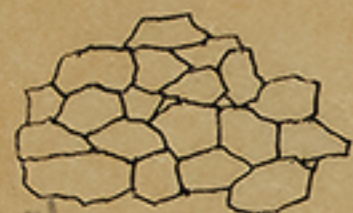
Koyundchik



Tomb of Cyrus

アッシリア





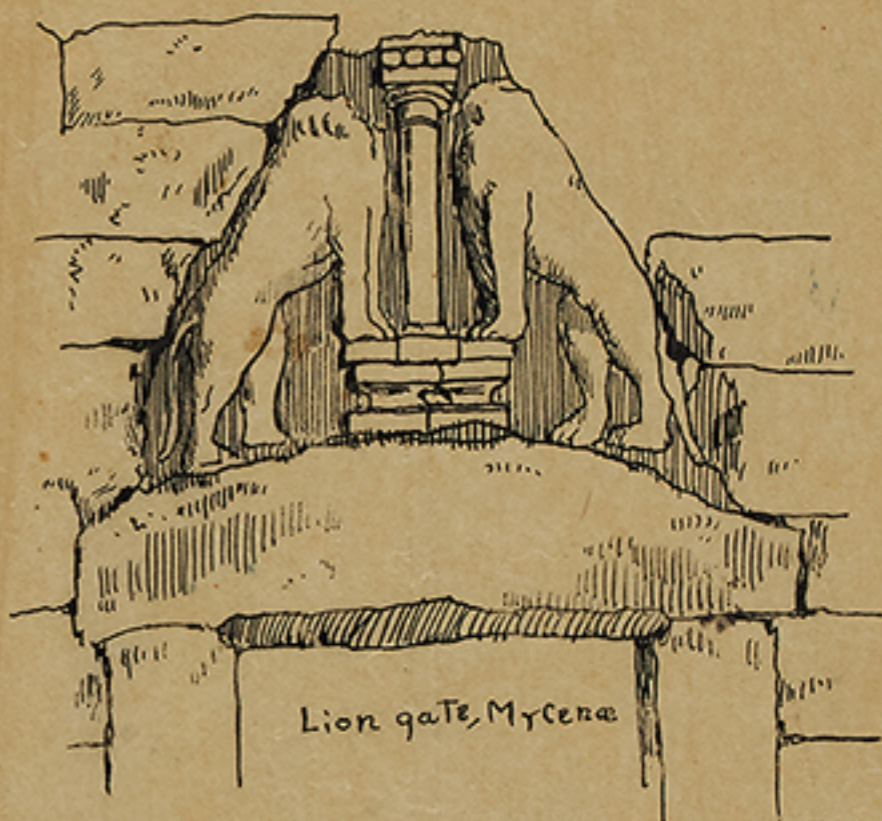
Polygonal



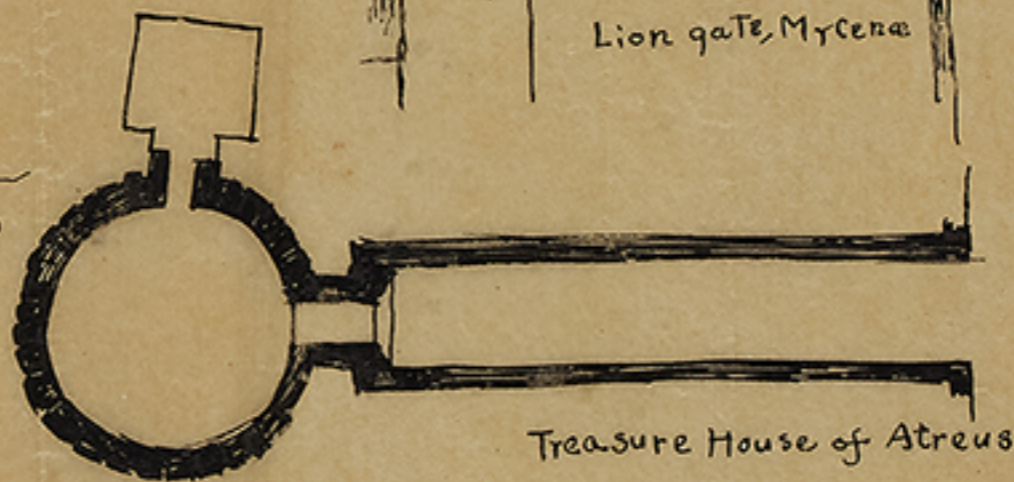
Cyclopean



Rectangular



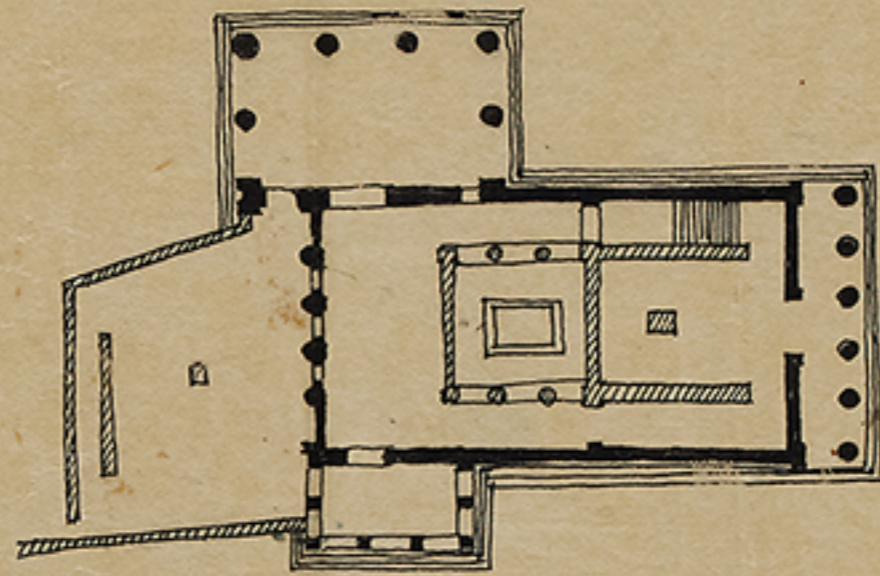
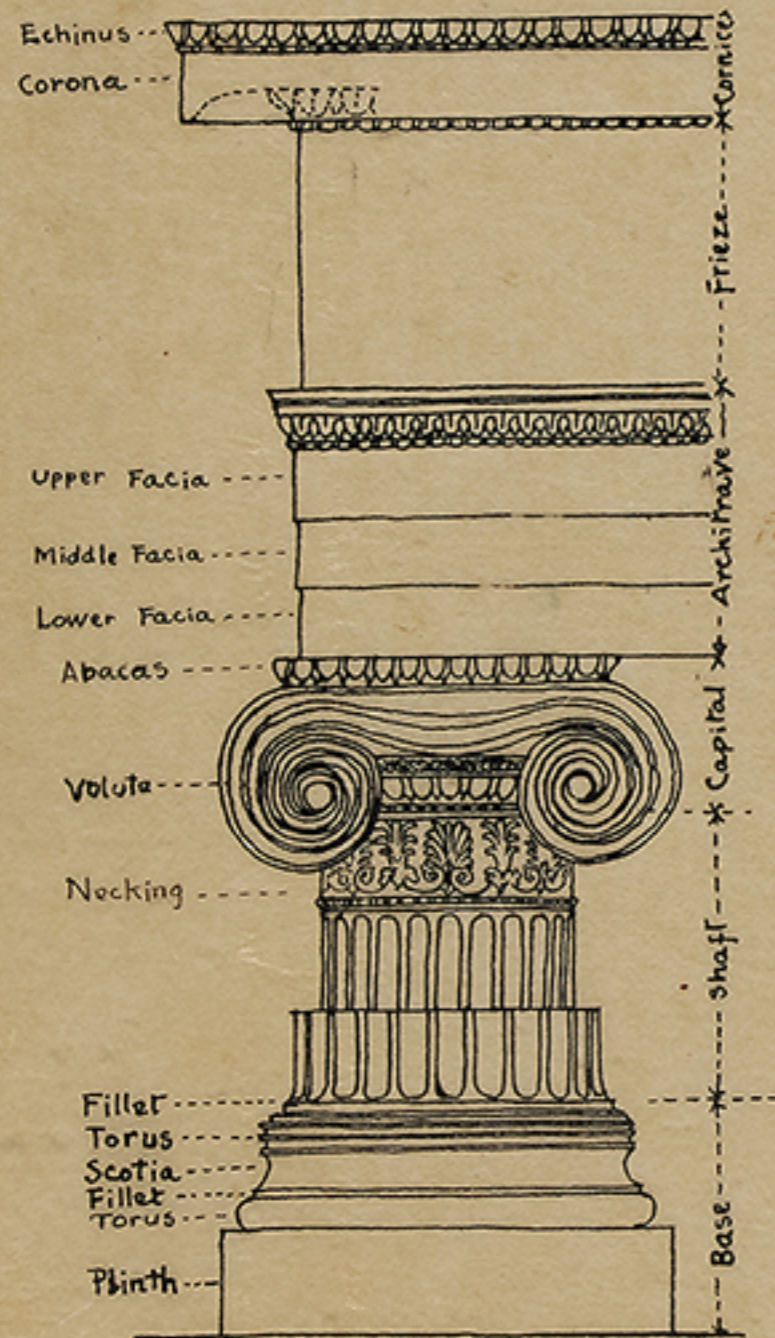
Lion gate, Mycena



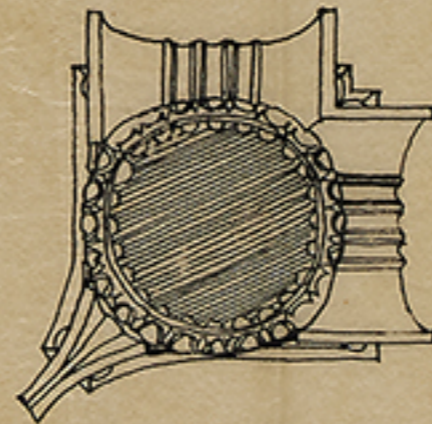
Treasure House of Atreus



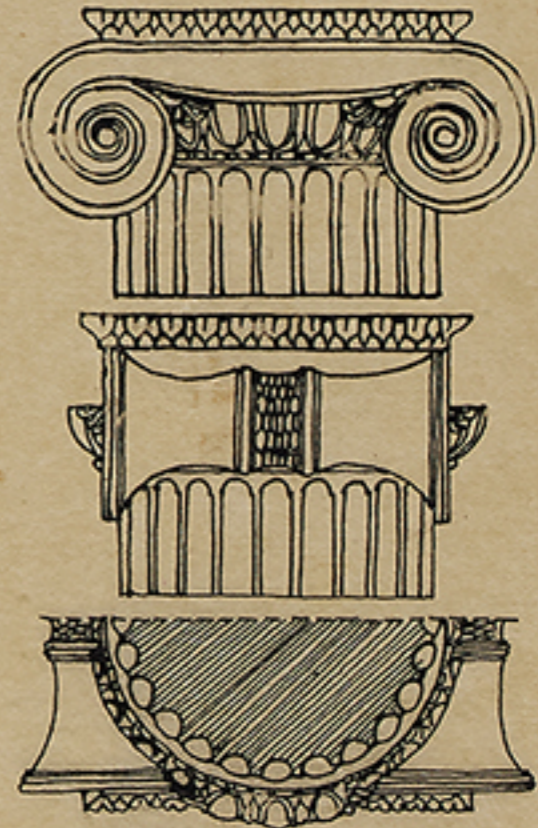
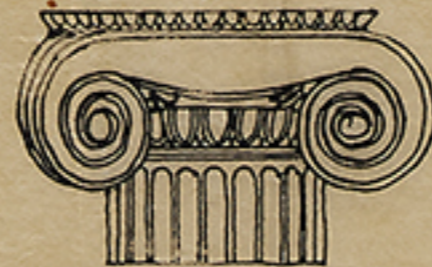
Section of Treasure House of Atreus



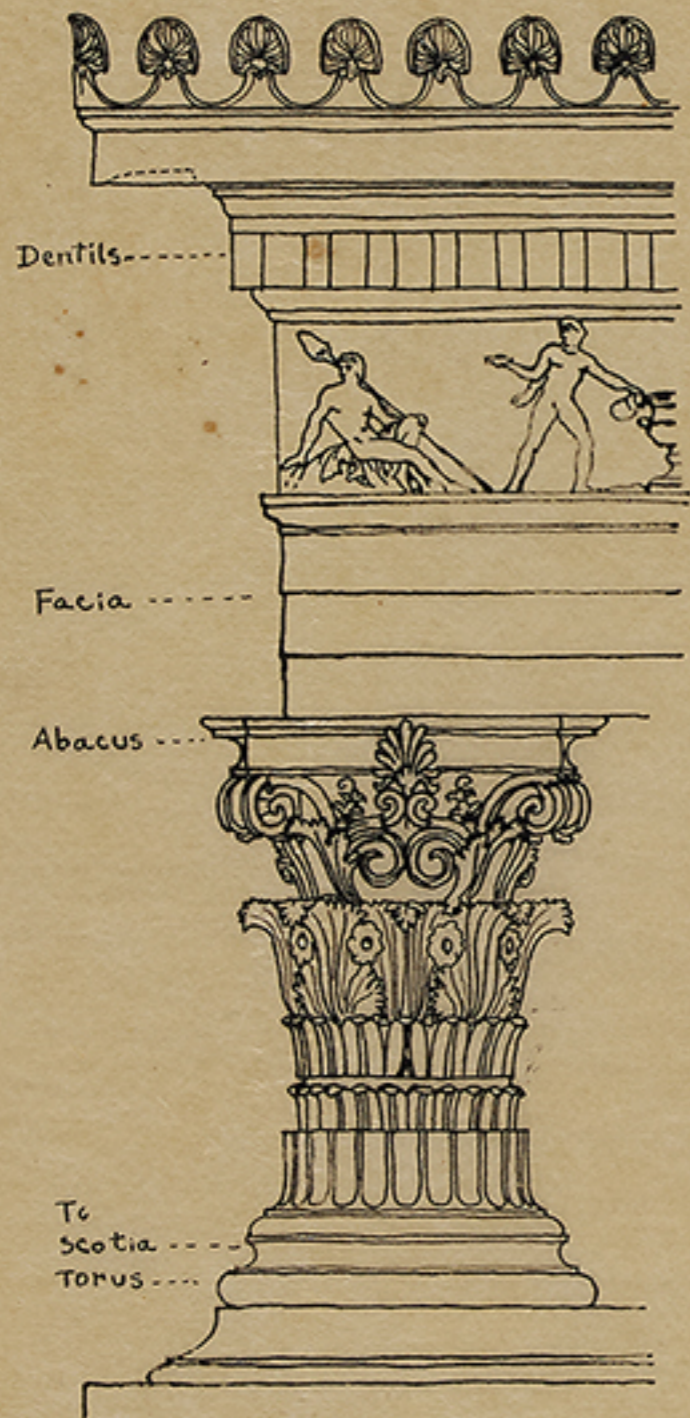
Plan of Erechtheion.



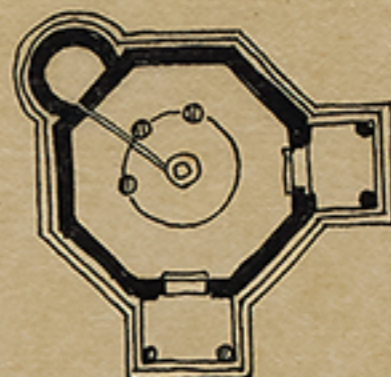
Elevation & Plan of Capital of Angle. (Temple of Victor)



Capital of Temple of Athens Priene.



quarter plan of Monument of Lysicrates



Tower of winds

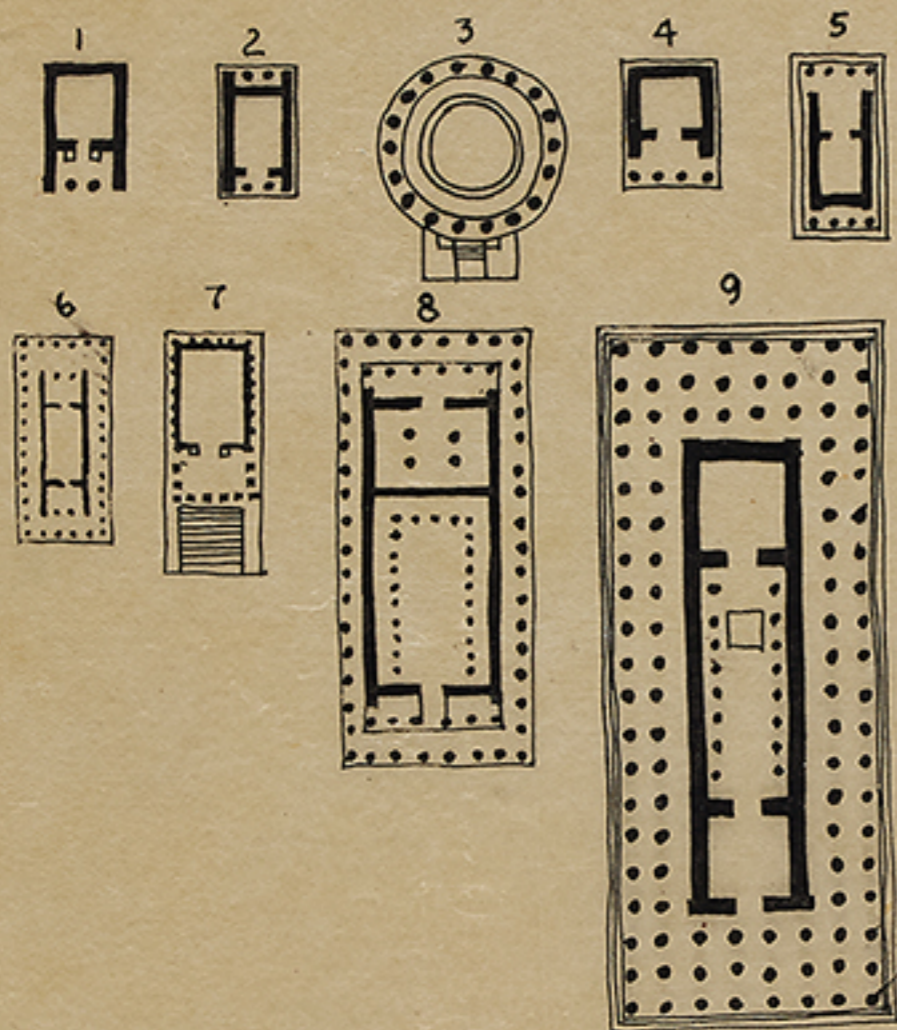


Capital from Tower of Winds

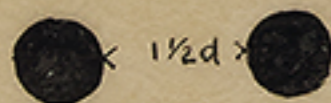


Capital from Zeus Temple, Athens.

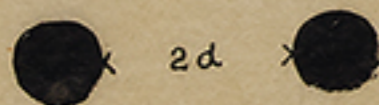




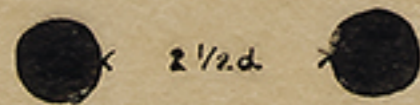
1. Temple at Rhamnus (distyle in antis) (Doric)
2. Temple of Artemis (amphi-antis distyle) (D)
3. Temple of Vesta at Tivoli (circular peripteral) (D)
4. Temple at Selinus (prostyle tetrastyle) (D)
5. Temple on the Ilissus (amphi-prostyle tetrastyle) (D)
6. The Theseion, Athens (peripteral hexastyle) (D)
7. Maison Carrée, Nimes (pseudoperipteral hexastyle) (Corinthian)
8. Parthenon (peripteral octastyle) (D)
9. Temple of Jupiter Olimpius, Athens (dipteral octastyle) (C)



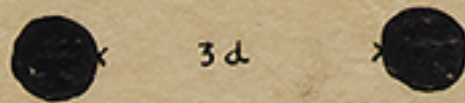
Pycnostyle — Narrow column



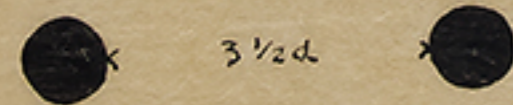
Systyle — Close column



Eustyle — Elegant column



Diastyle — Wide column

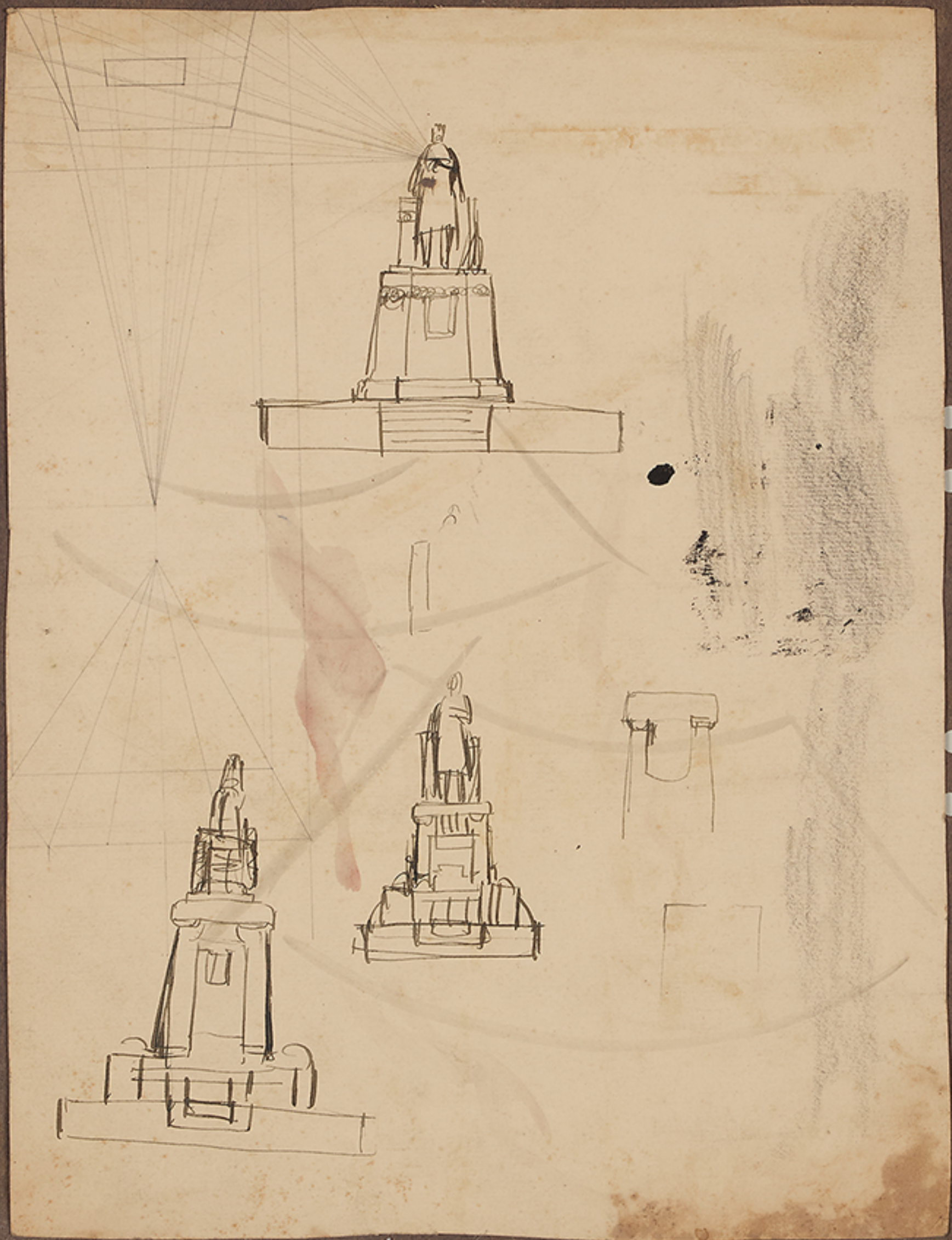


Aræostyle — Verry wide column

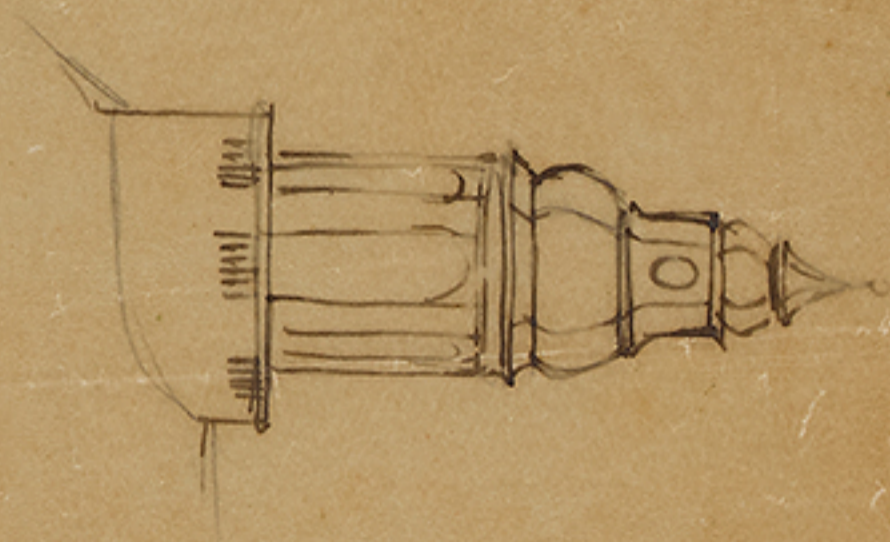
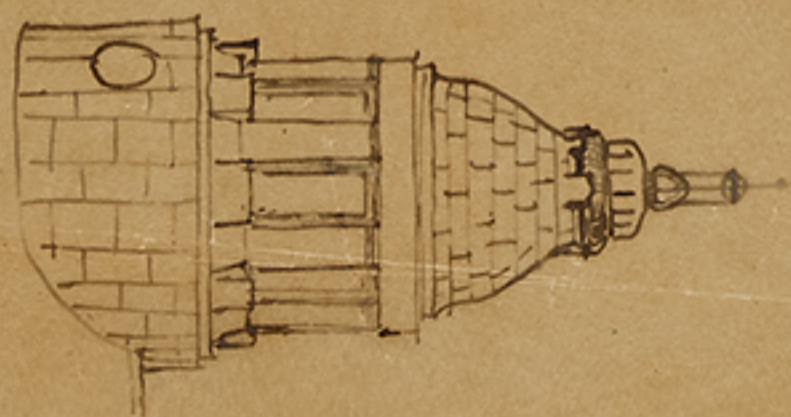


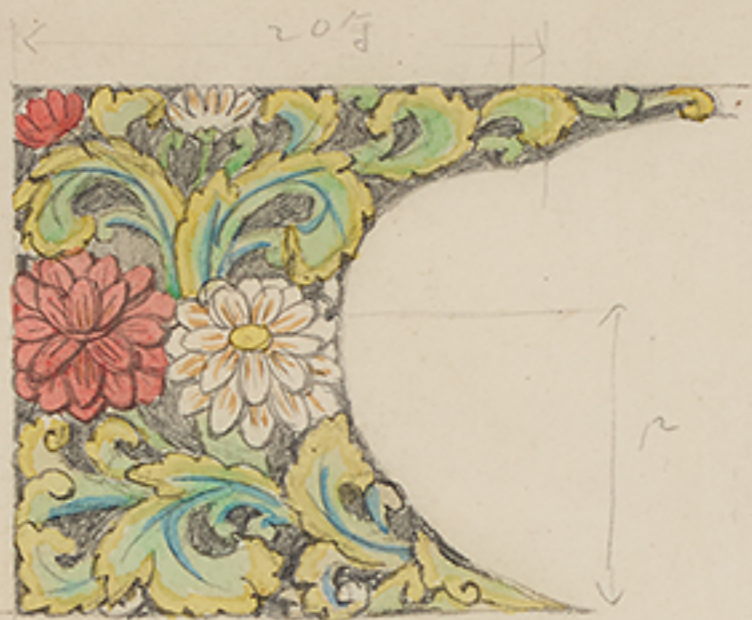








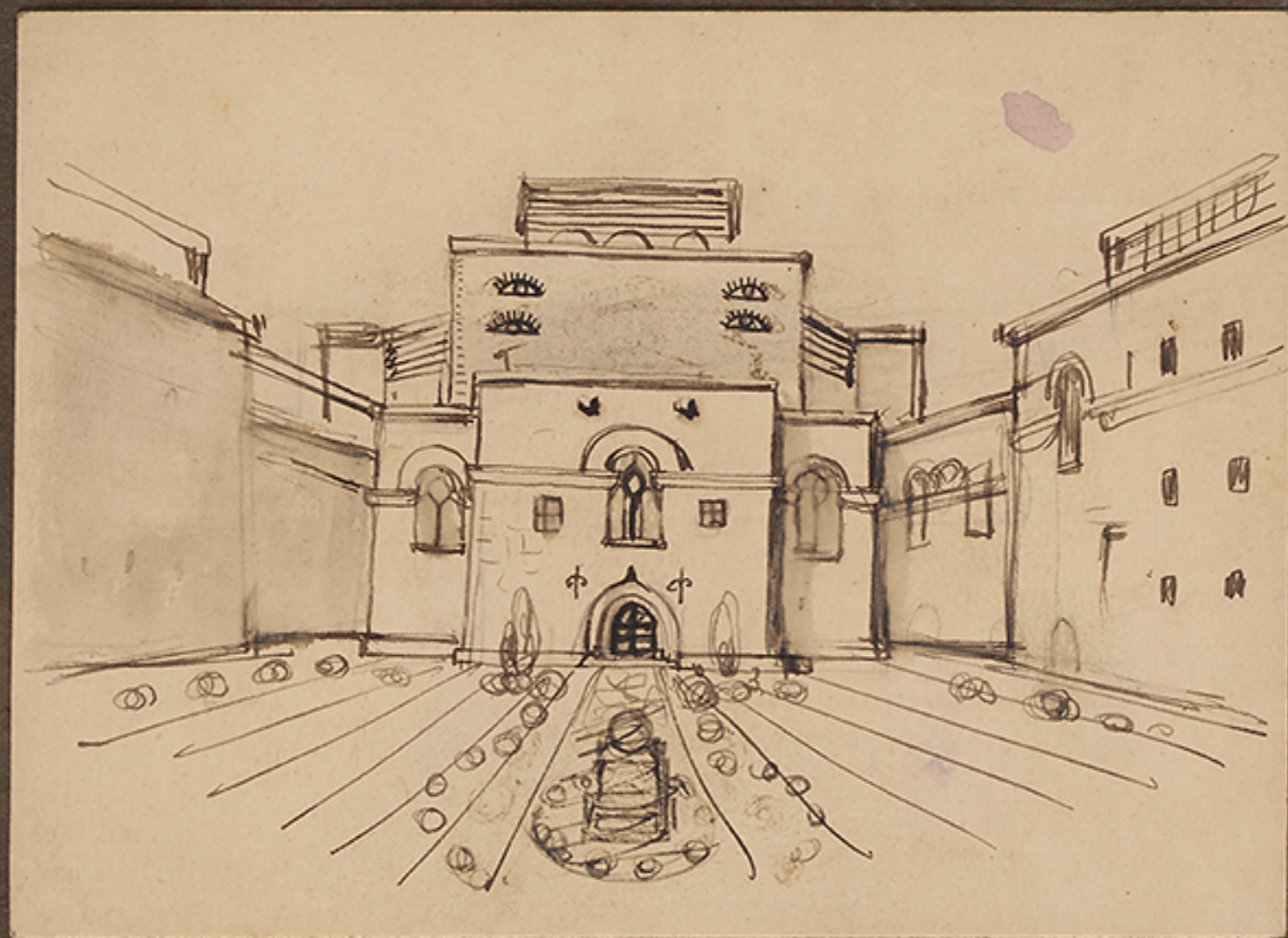


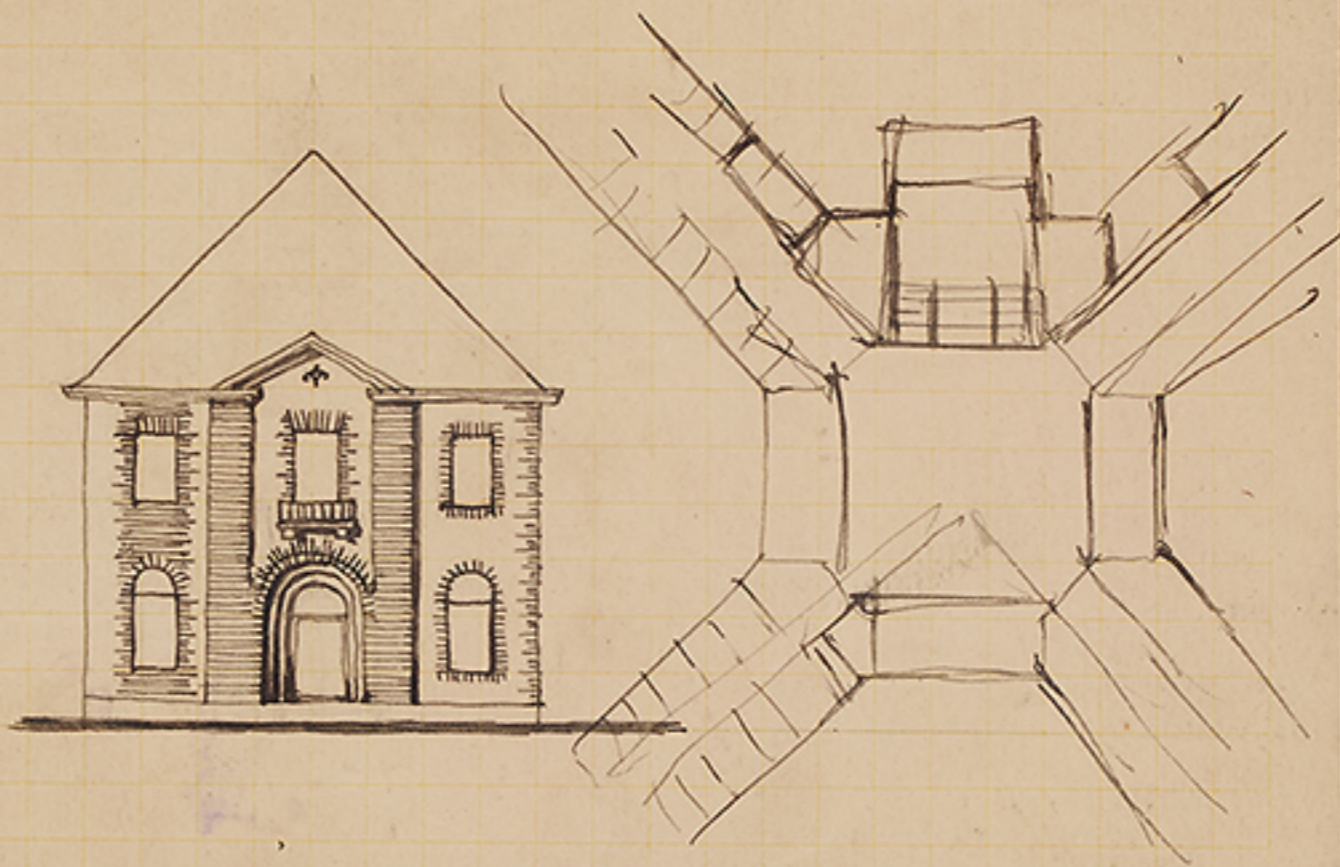


左



右







頭
三
丁



→
頭
右
三
丁



